

Load Monitoring - Load Cells

Ron 4000 Load Cell with built-in Amplifier

Ron 4000C 4-20mA Output | **Ron 4000V** 0-2V Output | **Ron 4000VC** 0-2V + 4-20mA Outputs

ADVANTAGES



5 year warranty

Portable: Lightweight and small. Available with Pelican™ carrying case.

High Linearity: $\pm 0.1\%$ of full range.

Quality Materials: Exclusive use of high strength aerospace quality steel for load cell bodies.

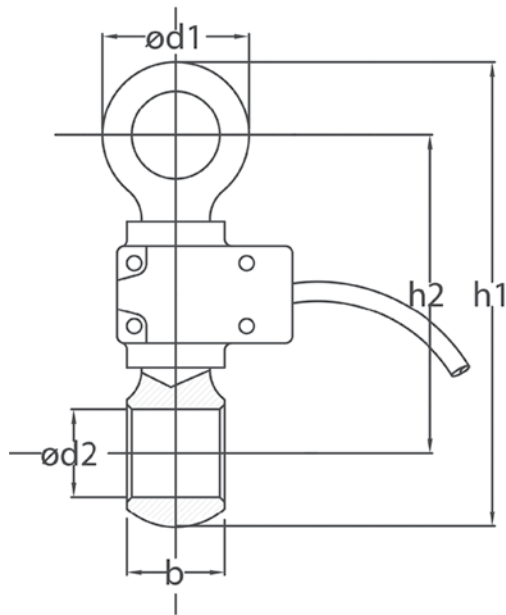
Robust: Heavy duty designs.

Amplified: Built in amplifier for easy integration with controllers.

Meets Standards: All Eilon Engineering load cells are **Fatigue Rated** according to ASME BTH-1-2017, ASME B30.26 and IEC 61508.

Short delivery time: In most cases 48-72 hours.

More than 40 years in the market with repeat customers such as NASA, Boeing, Cirque du Soleil, Disney, GE, Lockheed Martin, other Fortune 500 companies, as well as numerous small businesses.



TECHNICAL SPECIFICATIONS



Safety Factor: 5:1

Linearity: $\pm 0.1\%$ of full range.

Load Cell Material: high-strength, aerospace quality, alloy steel, polyurethane coated.

Proof Load: Each system proof-loaded to 200% of capacity (certified) up to a test force of 400t.

Outputs: 0-2V. Options: 4-20mA, 0-2V+4-20mA (Factory Set).

Cable: supplied with 9' (3m) cable.

Temperature Range: -15°f to $+175^{\circ}\text{f}$ (-25°c to $+80^{\circ}\text{c}$).

Environmental: Weatherproof, NEMA 4, IP 65.

Calibration: Supplied with approximate calibration (final calibration is performed by the customer, after connecting the load cell to the measuring / control system).

Zero load: $0\pm 0.05\text{v}$, $4\pm 0.2\text{mA}$.

Full load: $2\pm 0.1\text{v}$, $20\pm 1\text{mA}$.

Max. Input Current: 100mA.

Input Voltage: 12-36 VDC.

Wiring:

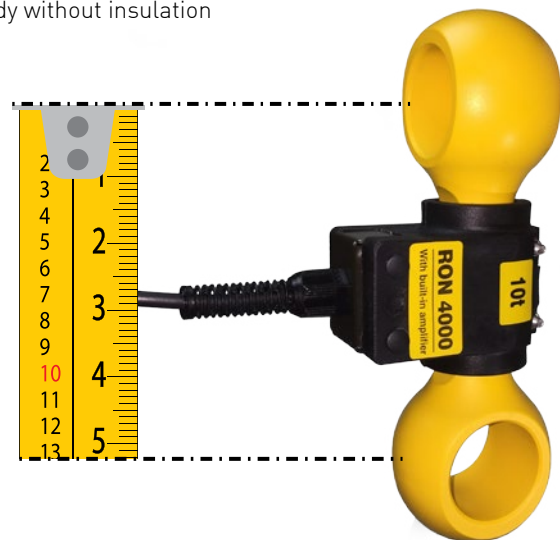
Input voltage Red

Common Black

Output V White

Output A Green

Body without insulation



Cat no.	Full range	Resolution		Load Cell weight		H1 (max.)		H2 (max.)		B (max.)		Ø D1 (max.)		Ø D2 (min.)		Matching anchor shackle size*
	tons	kgs	lbs	kgs	lbs	mm	inch	mm	inch	mm	inch	mm	inch	mm	inch	
S-005	0.5	0.2	0.5	0.3	0.7	125	4.9	92	3.7	16	0.7	31	1.3	17	0.66	1/2 7/16 3/8
S-01	1	0.5	1	0.3	0.7	125	4.9	92	3.7	16	0.7	31	1.3	17	0.66	1/2 7/16 3/8
S-02	2	1	2	0.3	0.7	125	4.9	92	3.7	16	0.7	31	1.3	17	0.66	1/2 7/16 3/8
S-03	3	1	2	0.3	0.7	137	5.4	100	4	19	0.75	38	1.5	21	0.82	5/8 1/2
S-05	5	2	5	0.5	1	147	5.8	105	4.2	26	1	43	1.7	23	0.9	3/4 5/8
S-10	10	5	10	1.4	3.1	195	7.7	131	5.2	41	1.6	61	2.4	36	1.4	1 1/4 1 1/8 1
S-12	12.5	5	10	1.4	3.1	195	7.7	131	5.2	41	1.6	61	2.4	36	1.4	1 1/4 1 1/8 1
S-15	15	5	10	2.5	5.5	220	8.7	141	5.6	45	1.7	74	3	40	1.5	1 3/8 1 1/4 1 1/8
S-20	20	10	20	2.5	5.5	220	8.7	141	5.6	45	1.7	74	3	40	1.5	1 3/8
S-25	25	10	20	3.7	8	240	9.4	150	5.9	58	2.3	87	3.4	44	1.7	1 1/2
S-30	30	10	20	3.7	8	240	9.4	150	5.9	58	2.3	87	3.4	44	1.7	1 1/2
S-40	40	20	50	8	17	320	12.6	195	7.7	71	2.8	115	4.5	60	2.3	2 1 3/4
S-55	55	20	50	8	17	320	12.6	195	7.7	71	2.8	115	4.5	60	2.3	2
S-85	85	50	100	18	40	405	16.9	255	10	97	3.8	145	5.7	76	3	2 1/2
S-100	100	50	100	28	60	450	17.7	275	10.8	121	4.8	165	6.5	81	3.18	CROSBY No. 2160 125t
S-125	125	50	100	28	60	450	17.7	275	10.8	121	4.8	165	6.5	81	3.18	CROSBY No. 2160 125t
S-200	200	100	200	57	121	575	22.6	350	13.8	145	5.7	210	8.3	106	4.2	CROSBY No. 2160 200t
S-250	250	100	200	106	225	800	31.5	490	19.3	178	7.0	260	10.2	138	5.4	CROSBY No. 2140 250t or No. 2160 300t
S-300	300	100	200	106	225	800	31.5	490	19.3	178	7.0	260	10.2	138	5.4	CROSBY No. 2160 300t

> USE SHACKLES WITH S.W.L. (SAFE WORKING LOAD) EQUAL TO, OR GREATER THAN SYSTEM'S FULL RANGE.

> The company reserves the right to make changes without notice.

OPTIONS



> Carrying case: Pelican or equivalent.