

DIGITAL MICROSCOPES

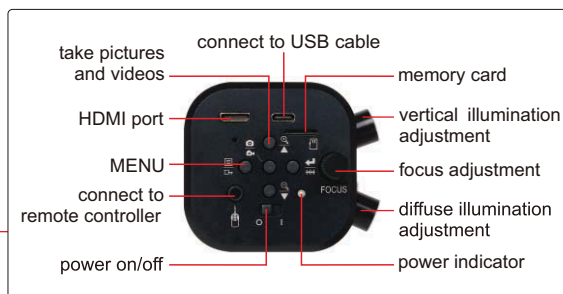


MEASUREMENT

TAKE PICTURES AND VIDEOS



5309-DM50

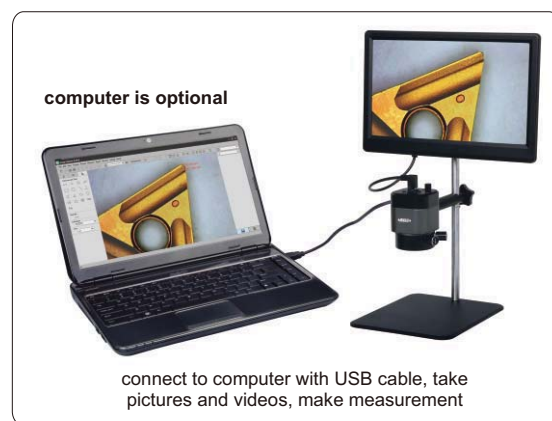


5309-DM51

- Independent control of vertical illumination and diffuse illumination
- Back focus adjustment extends working distance
- Take pictures and videos, save to memory card

SPECIFICATION

Code	5309-DM50	5309-DM51
Arm type	straight	universal
Sensor	1/2.8" CMOS	
Pixel	2M	
Resolution	1920×1080	
Exposure	real-time auto, single auto, manual adjustment	
White balance	real-time auto, single auto, manual RGB adjustment	
Record format	pictures: JPG videos: MOV	
Record media	memory card	
Working distance	45~169mm	42~195mm
Magnification	9~41X	7.6~49.4X
View field	7.6×4~38.5×21.7mm	7×4~45×25mm
Power supply	DC12V 3A	



USE COMPUTERS, OPTIONAL

Image magnification	View field	Measuring accuracy
9.0X	38.5×21.7mm	±0.02mm
13.0X	26.6×15.0mm	±0.02mm
17.0X	20.5×11.7mm	±0.02mm
22.0X	16.0×9.0mm	±0.02mm
28.5X	11.9×6.3mm	±0.02mm
34.0X	9.8×5.5mm	±0.01mm
41.0X	7.6×4.1mm	±0.01mm

STANDARD DELIVERY

Main unit	1 pc
Memory card and holder	1 pc
Plastic calibration rule (graduation 1mm)	1 pc
White/black plate	1 pc
Remote controller	1 pc
USB cable	1 pc
Measuring software	1 pc
Power adapter	1 pc



remote controller
(included)



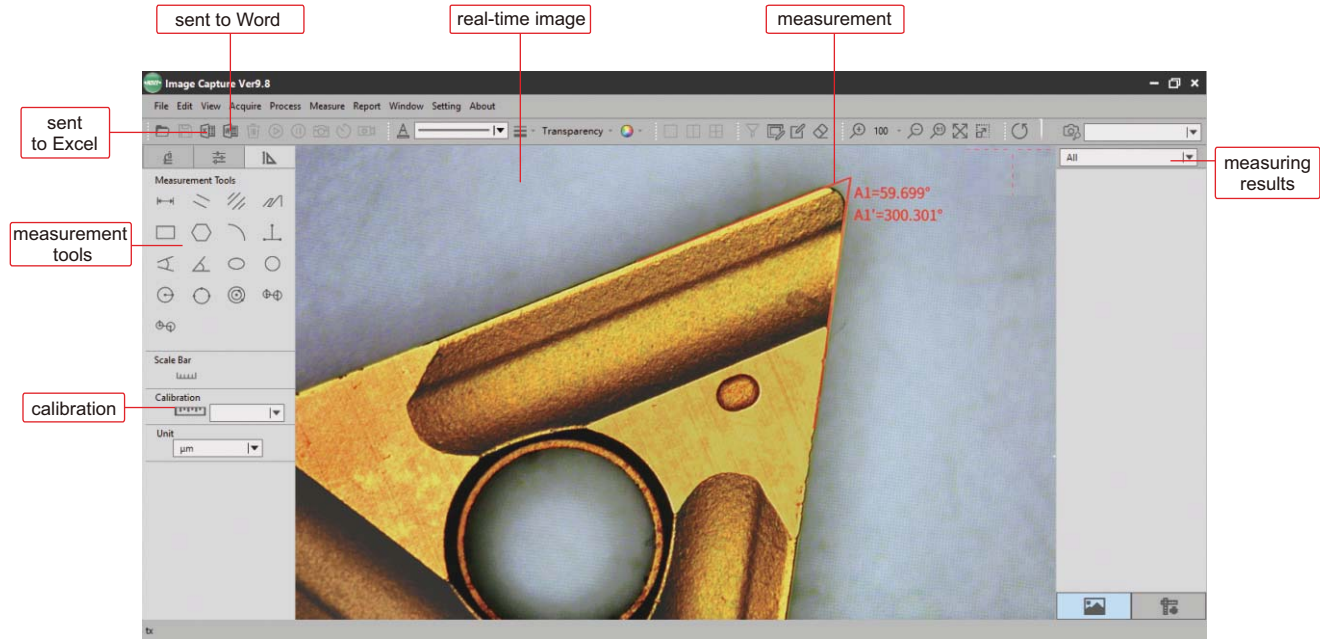
white/black plate
(included)



plastic calibration rule
(graduation 1mm, included)

SOFTWARE FOR COMPUTER

- Language: Chinese (Simplified), English, French, Chinese (Traditional), Portuguese, Korean, Japanese
- Operation system: Windows 7/8/8.1/10 (64bit)

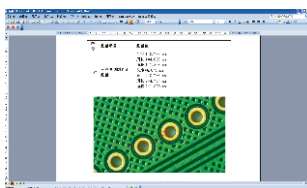


Measurement tools:

- | | | | | | | | |
|--|--|--|-------------------------------------|--|--|--|---------------------------------------|
| | straight line distance measurement | | parallel lines distance measurement | | centre distance between parallel lines measurement | | polyline line measurement |
| | rectangular measurement | | polygon measurement | | arc measurement | | three-vertical-line measurement |
| | four-point perspective measurement | | angle measurement | | ellipse measurement | | round measurement |
| | circle measurement by radius | | circle measurement by 3-point | | torus measurement | | center distance measurement by radius |
| | center distance measurement by 3-point | | | | | | |

Data is sent to Word or Excel:

sent to word



sent to excel

