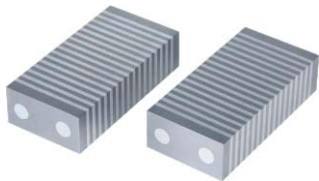
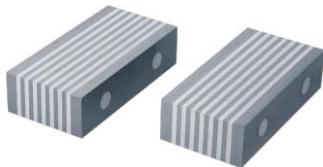


# MAGNETIC INDUCTION PARALLEL SETS (ECONOMIC TYPE)

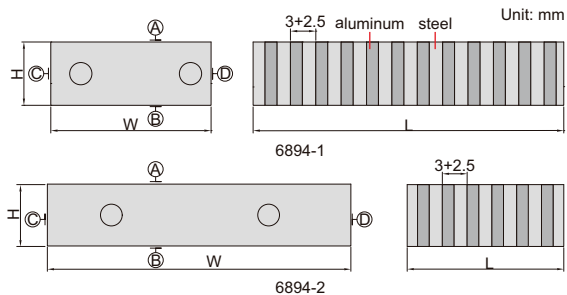
ATTENTION:  
NOT HARDENED



6894-1



6894-2



- To be used on magnetic chucks
- Two parallels per set
- Hardness HRB70

Code	Size (LxWxH)	Pole pitch	Parallelism between A and B	Parallelism between C and D	Height difference of a matched pair
6894-1	100x50x25mm	3+2.5mm	10 $\mu$ m	10 $\mu$ m	10 $\mu$ m
6894-2	50x100x25mm	3+2.5mm	10 $\mu$ m	10 $\mu$ m	10 $\mu$ m

