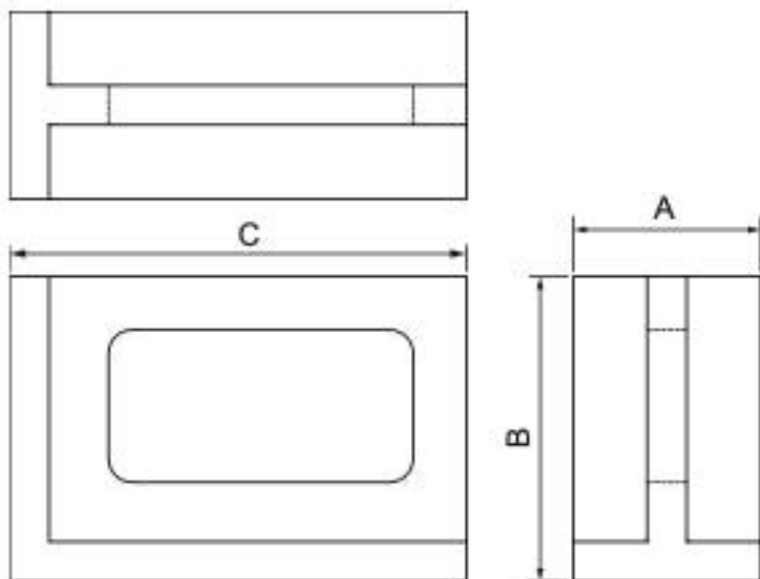




Precision Right Angle Plate



- Made of finest quality castings, stress relieved.
- All outside surfaces closely finished for square and parallel references.
- Precision ground: Square within 0.01mm per 100mm
Parallel within 0.01mm per 100mm

Unit:mm

ORDER NO.	Approx Dimensions			WEIGHT (kgs)	CODE NO.
	A	B	C		
VRH-6	150	150	202	14.5	1013-003
VRH-8	202	250	300	32.5	1013-004