

DIAL INDICATORS (STANDARD TYPE)

JEWELLED
BEARING

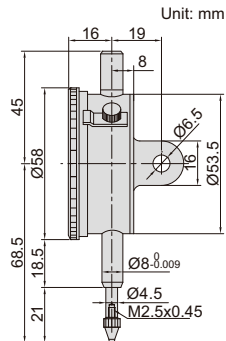
**INSPECTION
CERTIFICATE**
TRACEABLE TO NIST

- Meet DIN878
- Jeweled bearing
- Supplied with limit pointers and bezel clamp
- Optional accessory: backs (page 176~177), contact points (page 173~175)



2308-10A

Code	Range	Graduation	Accuracy	Hysteresis	Range/rev	Dial reading	Remark
2308-3FA *	3mm	0.01mm	12 μ m	3 μ m	1mm	0-100	flat back
2308-5FA *	5mm	0.01mm	14 μ m	3 μ m	1mm	0-100	flat back
2308-10FA *	10mm	0.01mm	17 μ m	3 μ m	1mm	0-100	flat back
2308-3A *	3mm	0.01mm	12 μ m	3 μ m	1mm	0-100	lug back
2308-5A *	5mm	0.01mm	14 μ m	3 μ m	1mm	0-100	lug back
2308-10A *	10mm	0.01mm	17 μ m	3 μ m	1mm	0-100	lug back



* Supplied with manufacturer inspection certificate traceable to NIST USA