

DIAL INDICATORS (LONG STROKE)

**INSPECTION
CERTIFICATE**
TRACEABLE TO NIST

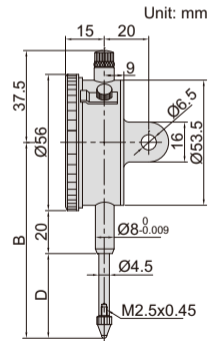


2310-30A

- Supplied with limit pointers and bezel clamp
- Optional accessory: backs (page 176~177), contact points (page 173~175)

Code	Range	Graduation	Accuracy	Hysteresis	Range/rev	Dial reading	Remark	B	D
2310-20FA*	20mm	0.01mm	25 μ m	5 μ m	1mm	0-100	flat back	83	35
2310-30FA*	30mm	0.01mm	35 μ m	7 μ m	1mm	0-100	flat back	88	40
2310-20A*	20mm	0.01mm	25 μ m	5 μ m	1mm	0-100	lug back	83	35
2310-30A*	30mm	0.01mm	35 μ m	7 μ m	1mm	0-100	lug back	88	40

(mm)



* Supplied with manufacturer inspection certificate traceable to NIST USA