

This quick change tool post has a very rigid design and all components are hardened and ground to give you high repeatability and very good accuracies to .005mm. Saving of set up time as different tool holders can be used and change over time can be reduced by using preset holders. A useful set for most lathes.

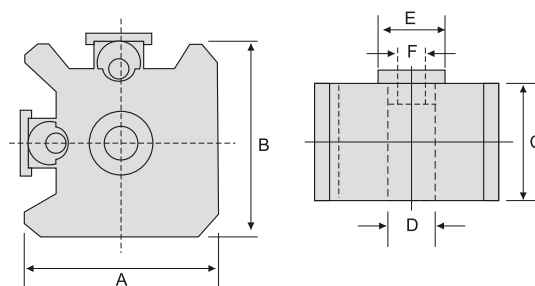
03

QUICK CHANGE SETS



Ordering No.	Size	Set Contain
390300	Small	1 main post 390200, 2std turning tool hldr 390204, 1 vee holder 390208, 1 parting tool hldr 390212.
390301	Medium	1 main post 390230, 2std turning tool hldr 390234, 1 vee holder 390238, 1 parting tool hldr 390242.
390302	Big	1 main post 390260, 2std turning tool hldr 390264, 1 vee holder 390268, 1 parting tool hldr 390272.

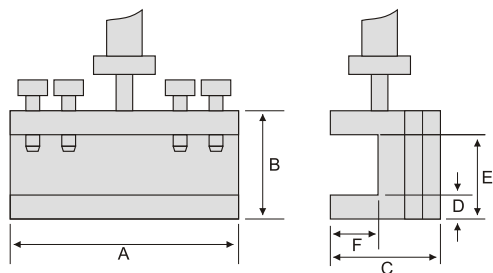
Quick Change Tool Posts



Ordering No.	Main Post	Mounting
	mm	
390200	60 x 60 x 38	2 Holders
390230	75 x 75 x 50	2 Holders
390260	100 x 100 x 75	2 Holders

Individual Tool Holders

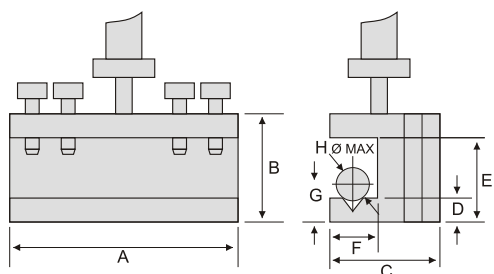
Turning Tool Holder Std



Ordering No.	A	B	C	D	E	F
	mm	mm	mm	mm	mm	mm
390204	58	27.5	28	6	13.5	10
390234	73	35	32	8	17	14
390264	98.5	50	39.5	13	22	19

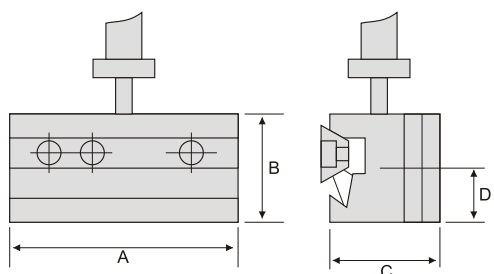


VEE Groove Holder



Ordering No.	A	B	C	D	E	F	G	H
	mm	mm	mm	mm	mm	mm	mm	mm
390208	58	27.5	28	8	13.5	10	13.5	13
390238	73	35	32	11	17	14	16	16
390268	98.5	50	39.5	12	22	19	22.5	19

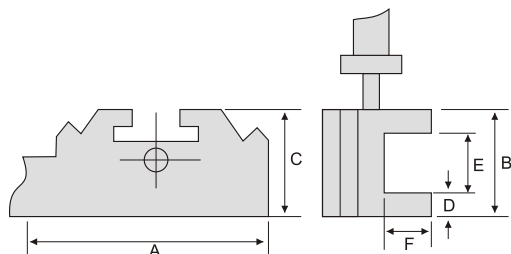
Parting Tool Holder



Ordering No.	A	B	C	D
	mm	mm	mm	mm
390212	58	32.5	28	16.5
390242	73	48	32	27
390272	98.5	57	39.5	33.5

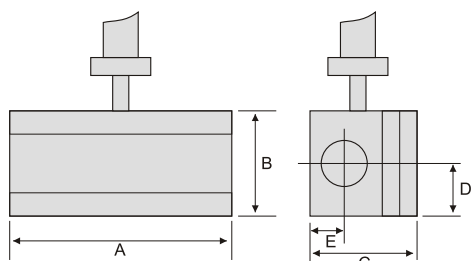
Extended Tool Holders

Turning Tool Holder Std



Ordering No.	All Sizes are in mm					
	A	B	C	D	E	F
390216	88	27.5	28	6	13.5	11
390246	98	35	32	8.5	17	13
390276	124	50	39.5	12.5	22	19

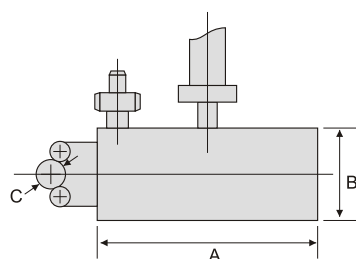
Plain Bore Holders



Ordering No.	All Sizes are in mm					
	A	B	C	D	E	F
390220	58	27.5	30	14	11	16
390250	73	35	36.5	17.5	12.5	19
390280	98.5	50	60.5	25	28.5	25.5

Drill chuck not included in supplies

Adjustable Knurling Tool Holder



Ordering No.	A	B	C	D	Min	Max
	mm	mm	mm	mm	mm	mm
390224	60	33	75	16	5	20
390264	75	48	100	19	5	40
390284	100	58	120	19	5	100

Knurls not included with the holder

D Ø Knurl Dia

