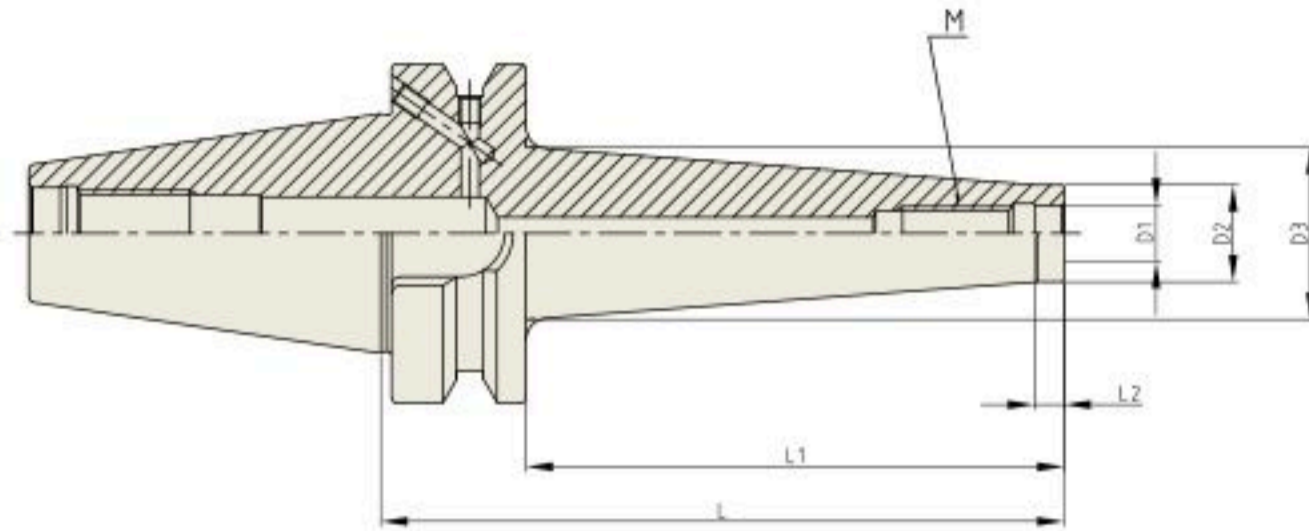
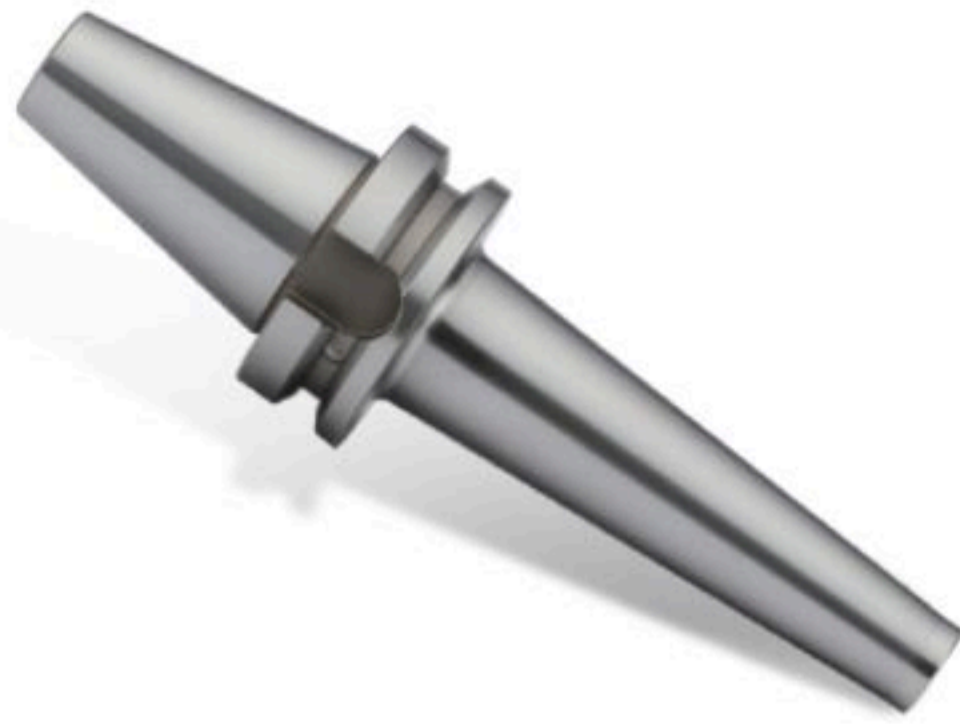


COPY MILL ARBOR

M



Unit : mm

TAPER No.	MODEL No. (M-L1)	EDP No.	D1	D2	D3	L	L1	L2	WEIGHT (Kg)
40	BT40AD/B-M6-25	P2801901	6.5	10	13	52	25	5	0.94
	BT40AD/B-M6-50	P2801902	6.5	10	20	77	50	5	0.99
	BT40AD/B-M6-75	P2801903	6.5	10	23	102	75	5	1.04
	BT40AD/B-M10-25	P2801907	10.5	18	20	52	25	5	0.97
	BT40AD/B-M10-50	P2801908	10.5	18	23	77	50	5	1.04
	BT40AD/B-M10-75	P2801909	10.5	18	32	102	75	5	1.28
	BT40AD/B-M16-25	P2801913	17	29	29	52	25	5	1.01
	BT40AD/B-M16-75	P2801914	17	29	34	102	75	5	1.32
	BT40AD/B-M16-125	P2801915	17	29	40	152	125	5	1.75
50	BT50AD/B-M16-50	P2801921	17	29	29	88	50	10	3.63
	BT50AD/B-M16-100	P2801922	17	29	36	138	100	10	3.98
	BT50AD/B-M16-150	P2801923	17	29	42.5	188	150	10	4.48

- ▶ Balancing grade G2.5 at 25,000 RPM or U max <1 gmm.
- ▶ For the screw in milling cutters with thread.

SK
(DIN 69871)

CBT
(BT DUAL CONTACT)

BT
(JIS B6339/MMS 403)

HSK
(DIN 69893/ISO 12164)

STRAIGHTTYPE & SET

ACCESSORY & PARTS