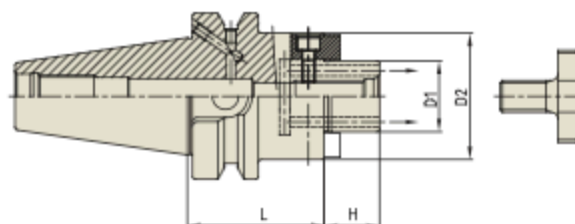


SHELL MILL ARBOR (Coolant Channel & Small Face)
SMA


Unit : mm

TAPER No.	MODEL No.	EDP No.	D1	D2	L	H	BOLT	WEIGHT (Kg)
40	BT40AD/B-SMA16C-60	P2801024C	16	32	60	17	M8x16L	1.00
	BT40AD/B-SMA16C-120	P2801035C	16	32	120	17	M8x16L	-
	BT40AD/B-SMA22C-60	P2801025C	22	40	60	19	M10x18L	1.20
	BT40AD/B-SMA22C-120	P2801036C	22	40	120	19	M10x18L	-
	BT40AD/B-SMA27C-60	P2801026C	27	48	60	21	M12x22L	1.34
	BT40AD/B-SMA27C-120	P2801037C	27	48	120	21	M12x22L	-
	BT40AD/B-SMA32C-60	P2801027C	32	58	60	24	M16x26L	1.55
	BT40AD/B-SMA32C-120	P2801038C	32	58	120	24	M16x26L	-
50	BT40AD/B-SMA40C-60	P2801028C	40	70	60	27	M20x30L	1.97
	BT50AD/B-SMA16C-75	P2801029C	16	32	75	17	M8x16L	3.00
	BT50AD/B-SMA22C-75	P2801030C	22	40	75	19	M10x18L	3.72
	BT50AD/B-SMA27C-75	P2801031C	27	48	75	21	M12x22L	3.87
	BT50AD/B-SMA27C-120	P2801041C	27	48	120	21	M12x22L	4.68
	BT50AD/B-SMA32C-75	P2801032C	32	58	75	24	M16x26L	4.08

▶ With "Coolant Through" by coolant channels.

 SK
(DIN 69871)

 CBT
(BT DUAL CONTACT)

 BT
(JIS B6339/MAS 403)

 HSK
(DIN 69893/ISO 12164)

STRAIGHTTYPE & SET

ACCESSORY & PARTS