

4306



Standard Zubehör
Standard accessories



1 Satz harte Umkehrbacken
1 Set of solid reversible jaws

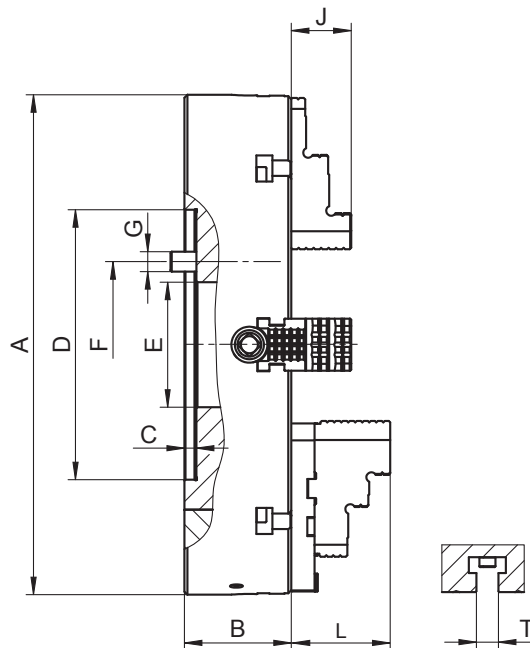


1 Schlüssel
1 Wrench

Ersatzteile • Spare parts 86-131

Technische Daten • Technical data 132-138

Artikel Nr. Code No.	Typ Type
354306110500	4306-100
354306111800	4306-125
354306112000	4306-160
354306120700	4306-200
354306121000	4306-250
354306130900	4306-315
354306140000	4306-400
354306150200	4306-500
354306160400	4306-630



■ Drehfutter ab ø250mm haben zusätzliche T-Nuten

■ Chucks above ø250mm have additional T-slots

A	B	C	D H7	E	F	G	J	L	T	kg
100	40,0	2,5	79,38	25	54,00	4xM8	17,0	-	-	2,5
130	43,0	2,5	69,80	26	54,00	4xM8	20,0	-	-	4,8
156	43,0	2,5	82,55	42	69,85	4xM10	20,0	-	-	6,6
200	72,5	5,0	110,00	50	82,60	4xM10	40,3	46,4	-	18,0
250	77,5	7,0	150,00	65	104,80	4xM12	40,3	60,4	14	27,0
315	87,0	7,0	175,00	80	133,40	4xM16	49,8	60,9	18	50,0
400	92,0	10,0	200,00	100	171,40	4xM16	49,8	72,3	18	86,0
500	107,0	12,0	270,00	125	235,00	4xM20	59,8	97,8	22	155,0
630	127,0	12,0	270,00	160	235,00	4xM20	59,8	97,8	22	300,0

Größere Durchmesser finden Sie auf Seite 66-79! • Larger diameters available on page 66-79!

4307



Standard Zubehör
Standard accessories



1 Satz harte Aufsatzbacken
1 Set of hard top jaws



1 Satz harte Grundbacken
1 Set of hard master jaws



1 Schlüssel
1 Wrench

Ersatzteile • Spare parts 86-131


Technische Daten • Technical data 132-138


Typ Type	Artikel Nr. Code No.
-	-
-	-
-	-
-	-
-	-
-	-
-	-
4307-500	354307250100
4307-630	354307260300

4304



Standard Zubehör
Standard accessories

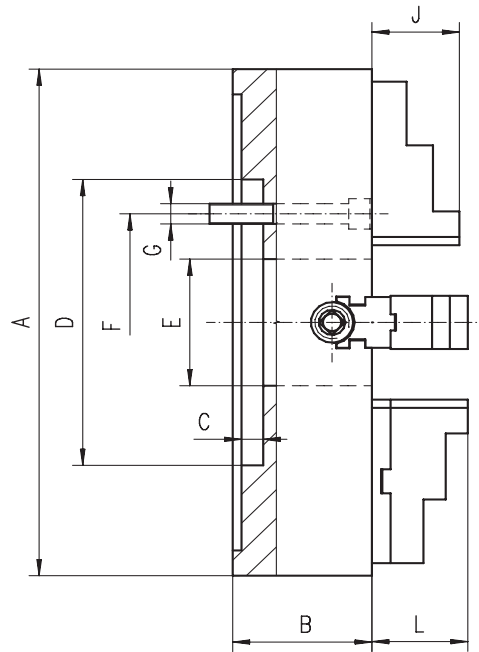
 **1 Satz harte Umkehrbacken**
1 Set of solid reversible jaws

 **1 Schlüssel**
1 Wrench

Ersatzteile • Spare parts **86-131**

Technische Daten • Technical data **132-138**

Artikel Nr. Code No.	Typ Type
● 354304050500	4304-200
● 354304060700	4304-250
● 354304070900	4304-315
● 354304080000	4304-400
● 354304090200	4304-500
● 354304100700	4304-630



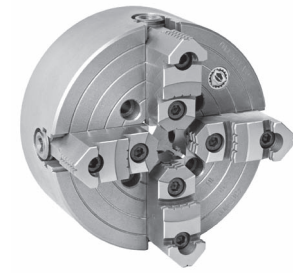
■ Drehfutter ab ø250mm haben zusätzliche T-Nuten

■ Chucks above ø250mm have additional T-slots


A	B	C	D	E	F	G	J	L	kg
200	80	5	110	50	82,6	4xM10	40,3	46,4	14
250	85	7	150	65	104,8	4xM12	40,3	60,4	25
315	95	7	175	80	133,4	4xM16	49,8	60,9	39
400	105	10	200	100	171,4	4xM16	49,8	72,3	61
500	120	12	270	125	235,0	4xM20	59,8	97,8	105
630	140	12	270	160	235,0	4xM20	59,8	97,8	163


Größere Durchmesser finden Sie auf Seite 66-79! • Larger diameters available on page 66-79!


4305



Standard Zubehör
Standard accessories

 **1 Satz harte Aufsatzbacken**
1 Set of hard top jaws

 **1 Satz harte Grundbacken**
1 Set of hard master jaws

 **1 Schlüssel**
1 Wrench

Ersatzteile • Spare parts **86-131**

Technische Daten • Technical data **132-138**

Typ Type	Artikel Nr. Code No.
-	-
-	-
-	-
-	-
4305-500	354305090000 ●
4305-630	354305100500 ●