

1
2
3
4
5
6



3534



Standard Zubehör
Standard accessories



1 Satz harte einteilige Bohrbacken
1 Set of hard outside-inside solid jaws



1 Satz harte einteilige Drehbacken
1 Set of hard outside solid jaws

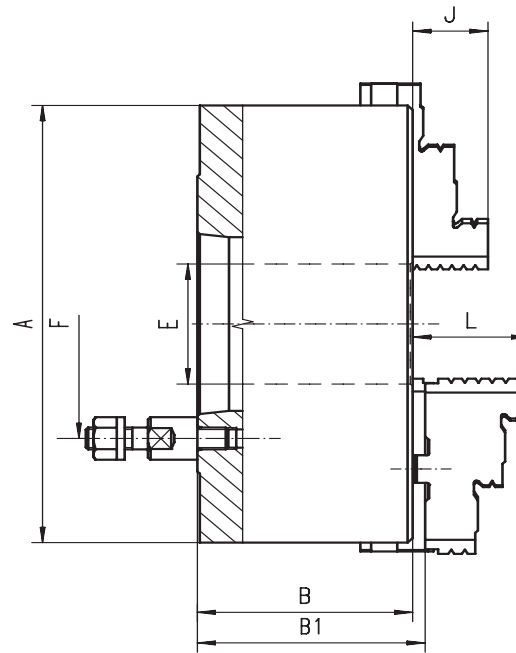


1 Schlüssel
1 Wrench

Ersatzteile • Spare parts 86-131

Technische Daten • Technical data 132-138

Artikel Nr. Code No.	Typ Type
353534570200	3534-125-3
353534580400	3534-125-4
353534600000	3534-160-4
353534610200	3534-160-5
353534630600	3534-200-5
353534640800	3534-200-6
353534670300	3534-250-6
353534680500	3534-250-8
353534700100	3534-315-6
353534710300	3534-315-8
353534720500	3534-315-11
353534740900	3534-400-8
353534750000	3534-400-11
353534450800	3534-500-8
353534460000	3534-500-11
353534470100	3534-630-11
353534480300	3534-630-15



- Gehärtete und geschliffene Oberflächen aller relevanten Baugruppen
- Planspirale gewuchtet
- Drehfutter ab ø500mm haben zusätzliche T-Nuten

- Hardened and ground working surfaces
- Balanced scroll plate
- Chucks above ø500mm have additional T-slots

A	KK 1:4	B	B1	E	F	Stehbolzen	J	L	kg
	ST 1:4					Stud bolts			
125	3	59,5	64,8	32,0	75,0	3	20	40,0	5
125	4	59,5	64,8	32,0	85,0	3	20	40,0	5
160	4	68,0	72,8	42,0	85,0	3	32	43,0	9
160	5	68,0	72,8	42,0	104,8	4	32	43,0	9
200	5	78,0	82,8	55,0	104,8	4	29	45,0	19
200	6	78,0	82,8	55,0	133,4	4	29	45,0	19
250	6	89,0	92,8	76,0	133,4	4	34	53,0	32
250	8	89,0	92,8	76,0	171,4	4	34	53,0	32
315	6	96,2	101,3	103,0	133,4	4	43	57,0	51
315	8	96,2	101,3	103,0	171,4	4	43	57,0	51
315	11	111,7	116,8	103,0	235,0	6	43	57,0	51
400	8	108,0	116,8	136,0	171,4	4	55	67,0	101
400	11	108,0	116,8	136,0	235,0	6	55	67,0	101
500	8	119,0	129,8	136,0	171,4	4	60	79,0	150
500	11	119,0	129,8	190,0	235,0	6	60	79,0	150
630	11	129,0	140,3	190,0	235,0	6	70	87,0	274
630	15	129,0	140,3	252,0	330,2	6	70	87,0	274

Größere Durchmesser finden Sie auf Seite 66-79! • Larger diameters available on page 66-79!

3535



Standard Zubehör
Standard accessories



1 Satz harte Aufsatzbacken
1 Set of hard top jaws



1 Satz harte Grundbacken
1 Set of hard master jaws



1 Schlüssel
1 Wrench

Ersatzteile • Spare parts 86-131

Technische Daten • Technical data 132-138

Typ Type	Artikel Nr. Code No.
3535-125-3	353535570000 ●
3535-125-4	353535580200 ●
3535-160-4	353535600900 ●
3535-160-5	353535610000 ●
3535-200-5	353535630400 ●
3535-200-6	353535640600 ●
3535-250-6	353535670100 ●
3535-250-8	353535680300 ●
3535-315-6	353535700000 ●
3535-315-8	353535710100 ●
3535-315-11	353535711400 ●
3535-400-8	353535720300 ●
3535-400-11	353535730500 ●
3535-500-8	353535450600 ●
3535-500-11	353535460800 ●
3535-630-11	353535470000 ●
3535-630-15	353535480100 ●



3234



Standard Zubehör
Standard accessories



1 Satz harte einteilige Bohrbacken
1 Set of hard outside-inside solid jaws



1 Satz harte einteilige Drehbacken
1 Set of hard outside solid jaws

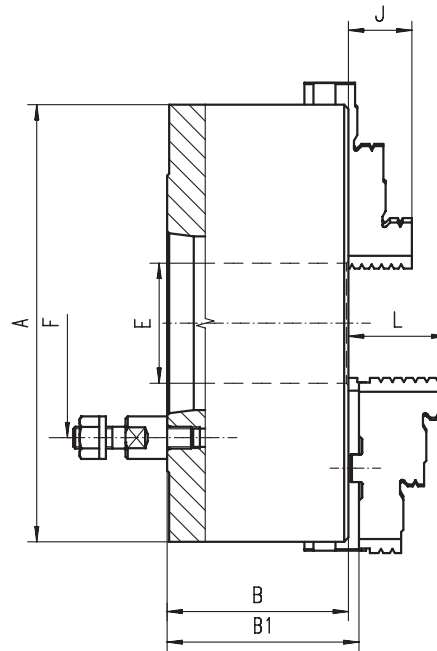


1 Schlüssel
1 Wrench

Ersatzteile • Spare parts 86-131

Technische Daten • Technical data 132-138

Artikel Nr. Code No.	Typ Type
● 353234210000	3234-125-3
○ 353234220100	3234-125-4
● 353234240500	3234-160-4
● 353234250700	3234-160-5
○ 353234290400	3234-200-5
● 353234300900	3234-200-6
● 353234330400	3234-250-6
● 353234340600	3234-250-8
● 353234360000	3234-315-6
● 353234370100	3234-315-8
● 353234380300	3234-315-11
● 353234400000	3234-400-8
● 353234410100	3234-400-11
○ 353234420300	3234-500-8
● 353234430500	3234-500-11
○ 353234460000	3234-630-11
○ 353234470200	3234-630-15



■ Geschliffene Oberflächen aller relevanten Baugruppen

■ Ground working surfaces

A	KK 1:4 ST 1:4	B	B1	E	F	Stehbolzen	J	L	kg
						Stud bolts			
125	3	70,0	74,8	32,0	75,0	3	20	40,0	5
125	4	70,0	74,8	32,0	85,0	3	20	40,0	5
160	4	81,5	86,3	42,0	85,0	3	32	43,0	9
160	5	81,5	86,3	42,0	104,8	4	32	43,0	9
200	5	91,0	95,8	55,0	104,8	4	29	45,0	19
200	6	103,5	107,3	55,0	133,4	4	34	53,0	32
250	6	103,5	107,3	76,0	133,4	4	34	53,0	32
250	8	103,5	107,3	76,0	171,4	4	34	53,0	32
315	6	117,7	122,8	103,0	133,4	4	43	57,0	51
315	8	117,7	122,8	103,0	171,4	4	43	57,0	51
315	11	140,0	145,0	103,0	235,0	6	43	57,0	51
400	8	128,5	137,3	136,0	171,4	4	55	67,0	101
400	11	128,5	137,3	136,0	235,0	6	55	67,0	101
500	8	146,0	156,8	136,0	171,4	4	60	79,0	150
500	11	146,0	156,8	190,0	235,0	6	60	79,0	150
630	11	165,0	176,3	190,0	235,0	6	70	87,0	274
630	15	165,0	176,3	252,0	330,2	6	70	87,0	274

Größere Durchmesser finden Sie auf Seite 66-79! • Larger diameters available on page 66-79!

3235



Standard Zubehör
Standard accessories



1 Satz harte Aufsatzbacken
1 Set of hard top jaws



1 Satz harte Grundbacken
1 Set of hard master jaws



1 Schlüssel
1 Wrench

Ersatzteile • Spare parts 86-131

Technische Daten • Technical data 132-138

Typ Type	Artikel Nr. Code No.
-	-
3235-125-4	353235220000 ●
3235-160-4	353235240300 ●
3235-160-5	353235250500 ●
3235-200-5	353235290200 ●
3235-200-6	353235300700 ●
3235-250-6	353235330200 ○
3235-250-8	353235340400 ●
3235-315-6	353235360800 ●
3235-315-8	353235370000 ○
3235-315-11	353235380100 ●
3235-400-8	353235400800 ●
3235-400-11	353235410000 ●
3235-500-8	353235420100 ●
3235-500-11	353235430300 ○
3235-630-11	353235460900 ○
3235-630-15	353235470000 ●