

Accuracy: $\pm 0.01\text{mm}$
 Force: 9N (50mm)

- 1-Transport lock
- 2-Anvil
- 3-Reference surface
- 4-Locking screw
- 5-Dial indicator
- 6-Base
- 7-Zero set surface



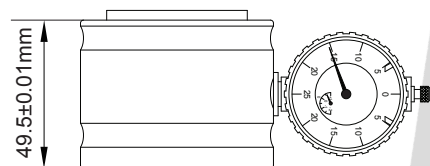
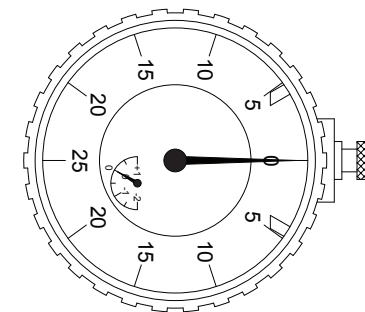
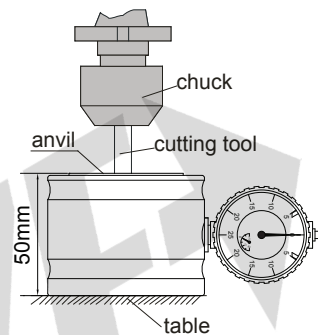
1. Before use, clean anvil, reference surface, base, surface of object with soft cloth.

2. Zero check:

- Release transport lock, press anvil to check anvil and dial indicator
- Press zero set surface to make anvil surface and reference surface to the same level, dial indicator shows that long pointer points 0, short pointer points -0.5 (Fig.1)
- If not, release locking screw and adjust dial indicator to set position

3. Measuring:

Move cutting tool to contact anvil surface, pointers of dial indicator start turning until short pointer points 0 and long pointer points 0, the cutting tool is now 50mm above the base.



zero set surface

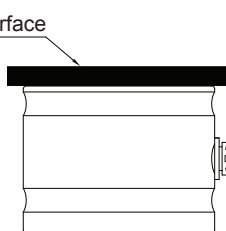


Fig.1

