



PCE Americas Inc.  
711 Commerce Way  
Suite 8  
Jupiter  
FL-33458  
USA  
From outside US: +1  
Tel: (561) 320-9162  
Fax: (561) 320-9176  
info@pce-americas.com

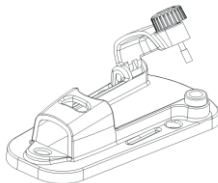
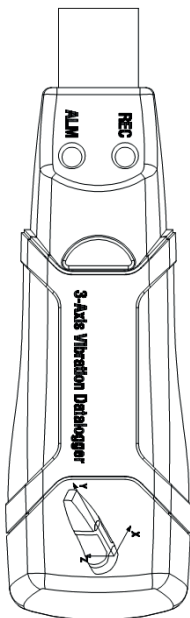
PCE Instruments UK Ltd.  
Units 12/13  
Southpoint Business Park  
Ensign way  
Hampshire / Southampton  
United Kingdom, SO31 4RF  
From outside UK: +44  
Tel: (0) 2380 98703 0  
Fax: (0) 2380 98703 9  
info@industrial-needs.com

[www.pce-instruments.com/english](http://www.pce-instruments.com/english)  
[www.pce-instruments.com](http://www.pce-instruments.com)

# Vibration Meter

## Instruction Manual

### PCE-VD 3



---

## 1. SAFETY INFORMATION

Read the following safety information carefully before attempting to operate or service the meter.

Use the meter only as specified in this manual:


- **Environment conditions**

- ① Altitude lower than 2000 meters
- ② Relatively humidity  $\leq 90\%RH$
- ③ Operation Ambient 0 ~ 40°C

- **Maintenance & Clearing**

- ① Repair or servicing not covered in this manual should be performed by qualified personnel.
- ② Periodically wipe the case with a dry cloth. Do not use solvents or eradicator on this instrument.

-  **Safety symbols**

 Comply with EMC

## 2. FUNCTIONS DESCRIPTION

This datalogger is engineered to record acceleration data of shock/vibration. This device will record and time 3-axis vibrations and peaks to provide a history of shock/vibration conditions. It is applied to the shock/vibration measurement such as transportation and Shipping Applications、building vibration、endurance testing , etc.

- Records 3-axis shock/vibration

- 
- Build-in accelerometers
  - Measures dynamic and static acceleration
  - Real-time operation
  - Normal & Motion detection mode
  - Freefall detection mode
  - Real-time FFT for frequency analyse
  - Manual & Automatic start

Note:

1. In motion detection mode, the datalogger only takes data after the trigger level(user preset) is exceeded.
2. If freefall mode is selected, the datalogger will record the time when freefall happens besides normal acceleration data.

### 3. Specification

**Acceleration Sensor:** MEMS Semiconductor

**Acceleration Range:**  $\pm 18g$

**Acceleration Resolution:** 0.00625g

**Calibrated Accuracy:**  $\pm 0.5g$

**Frequency Range:** 0Hz ~ 60Hz

**Data Memory:** 4Mbit FLASH ( 85764 peak acceleration samples and 210 freefall samples )

**Data Format:** time stamped peak acceleration and freefall, average and peak vector sum

**Sampling Rate:** 1 second to 24 hours

**Power:** 3.6V battery, specs:14250 or 1/2AAA

**Power Consumption:** 1mA (average) recording, <15 $\mu$ A idle

---

**Battery Life:** About 1000 hours

**Computer Interface:** USB

**Operation temperature and humidity:** 0°C ~40°C,  
10%RH~90%RH

**Storage temperature and humidity:** -10°C ~+60°C,  
10%RH~75%RH

**Dimension:**

The pedestal: 106mm x 56mm x 33.5mm

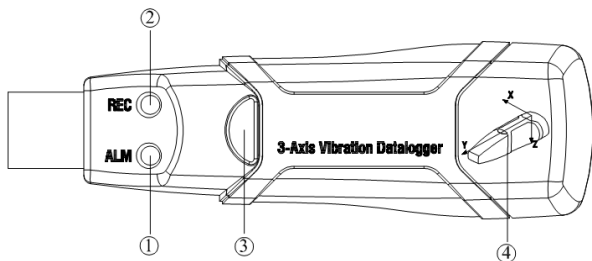
The datalogger: 95mm x 28mm x 21mm

**System Requirement:** Windows 2000 or Windows XP or Vista, Windows 7 / 8 / 10

**Minimum hardware requirement:** 8M EMS memory,2M hard disk,a free USB jack

**Accessories:** instruction manual, battery, windscreen, transparent cap, CD, USB cable, pedestal

## 4. NAME OF PARTS AND POSITIONS



- ① Red Green LED
- ② Green Red LED
- ③ Button: turn on/off the Datalogger
- ④ Direction indication of 3-axis

### LED FLASH INDICATION

LEDs	Meaning	Action
ALM    REC <span style="color: red;">●</span> <span style="color: green;">●</span>	No LEDs flash -No logging started -No battery fitted -Battery completely discharged	Fit Battery Data won't lose. Replace battery and download data

ALM ●	REG ●	Green single flash every 10 sec. * --Logging	Press the black button in housing of datalogger until Green LED flash four times sequencely, and then logging will start
ALM ⊙	REG ●	Red single flash every 30 sec.* --Low battery	If logging , it will stop automatically.Data won't los. Replace battery and download data
ALM ⊙	REG ●	Red and Green single flash every 60 sec. --Logger memory full	Download data

## 5. OPERATING INSTRUCTIONS

1. Setup the DataLogger by software before use it.
2. Under the Manual mode, press and hold the button for 2s, DataLogger start to measure, and LED indicates the function at the same time.( see LED FLASH INDICATION for details.)
3. Under the Automatic mode, the DataLogger start to measure after setup in software, LED indicate the function at the same time.( see LED FLASH

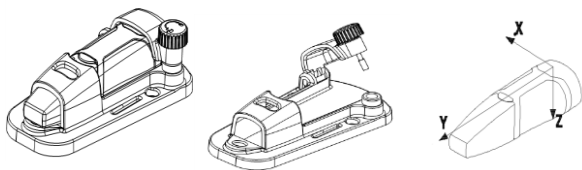
---

INDICATION for details.)

4. Under the Real-time FFT mode, the data update automatically, the latest FFT data will be stored.
5. During measurement, the green LED indicates the working state by flashing with the frequency setup in the software.
6. When datalogger memory full, Red LED and Green will flash every 60 sec .
7. As the battery power is not sufficient, red LED will flash every 30 sec for indication.
8. Press and hold the button for 2s until Red LED sequentially flash four times, and then logging will stop, or connect the datalogger to the host and download the data, the datalogger will stop automatically.
9. DataLogger data can be read time after time, the readings you are checking are the real time measured ones. ( 1 to 85764 readings ) ;if set the datalogger the last data will be lost.
10. Without battery, the latest 1 hours (the most) data will be lost. Other data can be read in software after battery is installed.
11. When replacing the battery, turn off the meter and open the battery cover. Then, replace the empty battery with a new 1/2AAA 3.6V battery and go for the cover.

---

## 6. Installation instructions



You have to fix the datalogger to the object rigidly, there are three ways as follow:

### 1. Screw Install

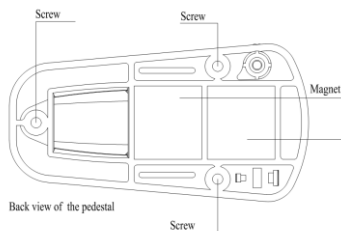
Fix the pedestal with three Screws, if screws is permitted in your application, this way will be preferable.

### 2. Glue Install

Fix the pedestal with glue, wait for the pedestal is tightly stuck to the object.

### 3. Magnet Install

Connect the pedestal and the object with magnetism, this way need the object can be absorbed with a magnet.





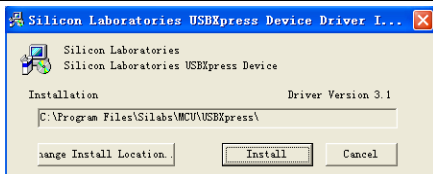
---

## **7. NOTICE**



1. Do not store or operate the instrument at high temperature and high humidity environment.
2. When not in use for long time, please take out the battery to avoid battery liquid leakage and cauterly on the instrument
3. Without battery, the latest 1 hours (the most) data will be lost.
4. The logger will log peak value of vibration/shock during sampling interval.
5. You have to setup the DataLogger by software before use it.
6. For the affection of gravity, You have to start the logger after fix the logger tightly to the object. otherwise the three axis X,Y,Z will not be calibrate correctly.

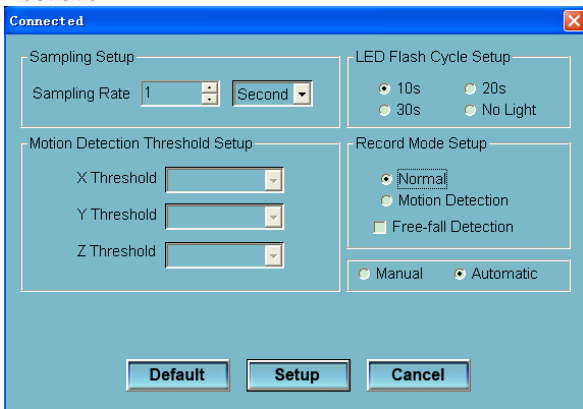
## **8. SOFTWARE INSTALLATION AND OPERATION**

1. Start windows
2. Insert the CD into the CD-ROM
3. Run SETUPGUIDE.EXE installation program in file DISK1, install it to the directory of C:\Program Files\Vibration Datalogger.
4. After finishing the Vibration Datalogger software installation, this window will pop-up



Click “Install” to finish the driver installation. After a successful installation of software and drivers, you can run the Vibration Datalogger software and communicate with the meter.


5. Double click the icon “” to start the software, Click on the icon  on the menu bar. The Setup window will appear as shown below; descriptions for each field in the Setup window are listed directly below for illustration:

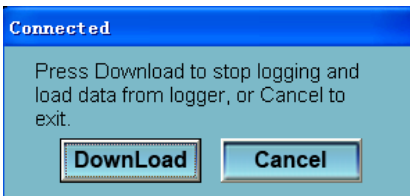


- 
- The Sampling Setup field instructs the DATA LOGGER to log readings at a specific rate . You can input specific sampling rate data at the left Combo box and select the time unit at the right Combo box.
  - The Motion Detection Threshold Setup field allows the user to set the acceleration detection threshold.Once the acceleration value is over the threshold,the DATA LOGGER will work.
  - The LED Flash Cycle Setup field can be set 10s/20s/30s by the user depending on the requirement. By selecting “No Light” option, there will be no flash there by increase the battery life.
  - The DATA LOGGER Record Mode can be set as Normal and Motion Detection.
  - Free-fall Detection field can be set for detecting Free-fall events or not.
  - The Manual and Automatic select buttons allows the user to start data logging immediately when exit the Setup window(Automatic) or at a later time (Manual).

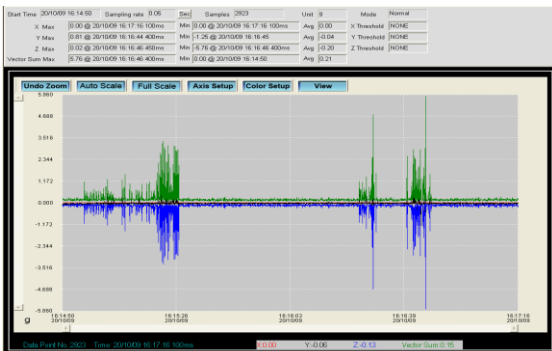
Click on the SETUP button to save changes. Press the DEFAULT button to set the Logger to factory default condition. Press the CANCEL button to abort the setup.


Notes:All stored data will be permanently erased when Setup is finished. To enable you to save the data before it is lost, click Cancel and then you need to download data. The battery might be exhausted before logger finish specified sample points. Always ensure that the remaining power in the battery is sufficient for completing your logging task. If in doubt, we recommend that you always install a fresh battery before logging critical data.

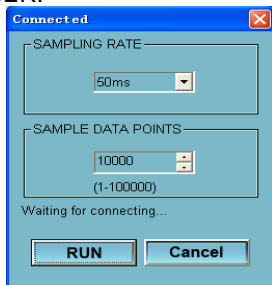
6. Download Data, To transfer the readings stored in the Logger to the PC:
  - A. Connect the DATA LOGGER to the USB port.
  - B. Open the Datalogger software program if it is not still running
  - C. Click the Download icon .
  - D. The Window shown below will appear. Click DOWNLOAD to begin transferring data



Once the data is successfully downloaded, the window shown below will appear.





7. Run, Click  icon to read real-time data from the DATA LOGGER.

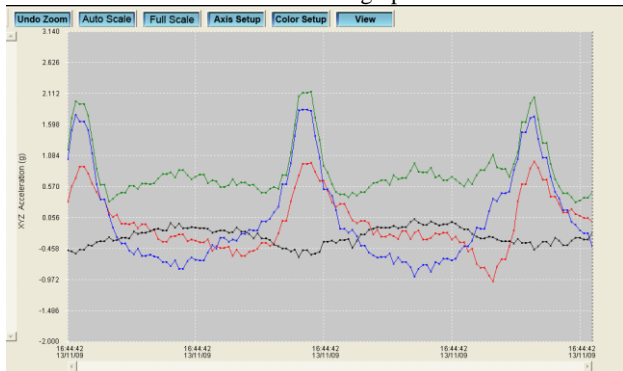



First, Setup the sampling rate and sample data points, then click RUN to start reading.

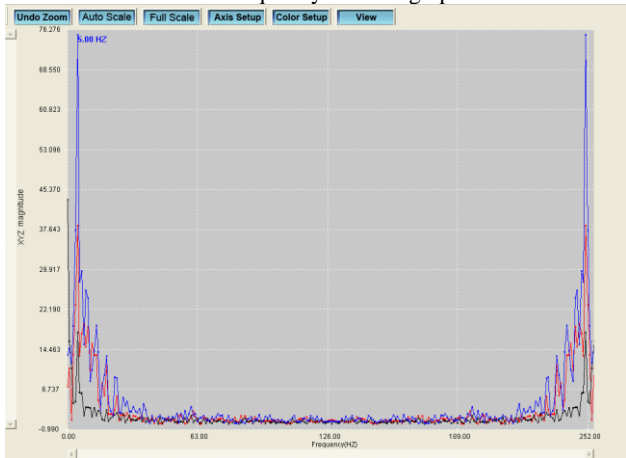
8. Reading for FFT Analysis 

Click  icon to read real-time spectral data for FFT analysis.

Click  to show the time-domain graph.



Click  to show the frequency-domain graph.



The software computes real-time spectral data using an FFT from 0 to 256 HZ.

The frequency of the max magnitude will be showed on this panel

- 9.** Please view the Help file for specific application of the software