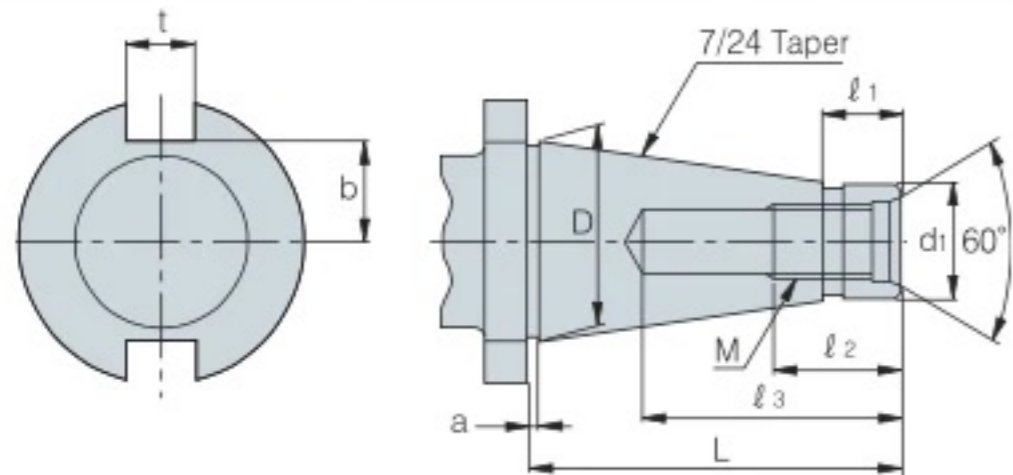


# Tapers



## Standard taper of american milling machine



NT No.	Dimensions	D	D <sub>1</sub>	L	l <sub>1</sub>	M	l <sub>2</sub>	l <sub>3</sub>	a	t	b
30	1 $\frac{1}{4}$	31.750	17.40 <sup>-0.29</sup> <sub>0.36</sub>	70	20	UNC $\frac{1}{2}$ "	24	50	1.6	15.9	6
40	1 $\frac{3}{4}$	44.450	25.32 <sup>-0.30</sup> <sub>0.384</sub>	95	25	UNC $\frac{5}{8}$ "	30	60	1.6	15.9	22.5
50	2 $\frac{3}{4}$	69.850	39.60 <sup>-0.31</sup> <sub>0.41</sub>	130	25	UNC 1"	45	90	3.2	25.4	35
60	4 $\frac{1}{4}$	107.950	60.20 <sup>-0.34</sup> <sub>0.46</sub>	210	45	UNC 1 $\frac{1}{4}$ "	56	110	3.2	25.4	60

(mm)