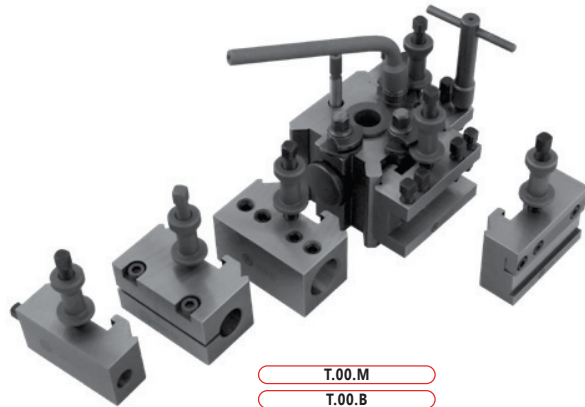


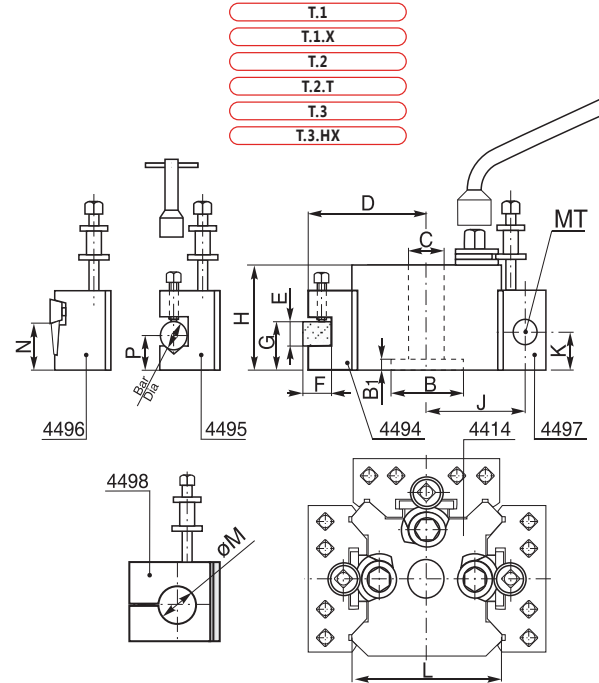
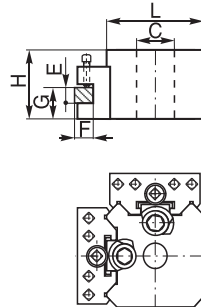
4414

- Schnellwechsel-Stahlhalter
- Quick change toolposts



T.00.M
T.00.B
T.0

T.1
T.1.X
T.2
T.2.T
T.3
T.3.HX



Grösse Size	H	B	B ₁	C	D	E	F	G max.	G min.	Bar Dia	P max.	P min.	MK MT	J	K max.	K min.	L	N	M
								G max.	G min.		P max.	P min.			K max.	K min.			
T.00.M	37,0	—	—	11,2	50,0	12	11,0	27,0	17,0	11,0	22,5	12,5	—	—	—	—	58,0	16,0	—
T.00.B	42,0	—	—	16,0	50,0	12	11,0	32,0	17,0	11,0	27,5	12,5	—	—	—	—	58,0	16,0	—
T.0	51,0	22,22	12,5	19,0	62,0	16	13,0	36,5	20,5	16,0	32,0	16,0	1	52,5	28,5	16,0	73,0	27,0	19,0
T.1	63,5	31,75	8,5	19,0	62,0	20	13,0	46,0	30,0	16,0	44,5	25,5	1	52,5	41,0	22,0	73,0	27,0	19,0
T.1.X	73,0	31,75	8,5	19,0	62,0	20	13,0	57,0	35,0	16,0	54,0	32,0	1&2	52,5	51,0	28,5	73,0	27,0	19,0
T.2	71,5	44,45	9,5	25,5	74,5	20	19,0	52,5	36,5	19,0	46,0	24,0	2	65,0	47,5	27,0	97,0	33,5	25,4
T.2.T	76,0	44,45	9,5	25,5	84,0	25	25,5	58,5	39,5	19,0	50,0	24,0	2	70,0	51,0	27,0	106,0	33,5	25,4
T.3	95,5	50,80	11,5	25,5	101,5	32	25,5	74,5	51,0	25,5	51,0	28,5	3	85,5	58,2	36,5	125,5	39,5	38,0
T.3.HX	108,0	50,80	11,5	25,5	101,5	32	25,5	84,0	62,0	25,5	65,0	41,0	3	85,5	58,2	36,5	125,5	39,5	38,0

- 1
- 2
- 3
- 4
- 5
- 6

4414

1

2

3

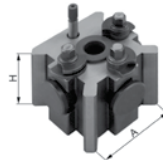
4

5

6

4414

- Schnellwechsel-Stahlhalter
- Quick change toolposts



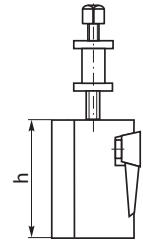
Artikel Nr.	Typ	A x H	Spannbereich
Code No.	Type		Clamping range
80000651	T.00.M	48 x 37	bis zu/ up to 89 mm
80000652	T.00.B	48 x 42	bis zu/ up to 89 mm
80000653	T.0	62 x 51	bis zu/ up to 114 mm
80000654	T.1	62 x 63	114 mm bis/ up to 127 mm
80000655	T.1.X	62 x 73	114 mm bis/ up to 127 mm
80000656	T.2	82 x 71	127 mm bis/ up to 203 mm
80000657	T.2.T	82 x 76	127 mm bis/ up to 203 mm
80000658	T.3	100 x 92	203 mm bis/ up to 292 mm
80000659	T.3.HX	100 x 108	203 mm bis/ up to 292 mm

4496

- Standard Schnellwechseleinsatz
- Part off toolholders



Artikel Nr.	Grösse	Für Typ	b x h
Code No.	Size	For Type	
80000674	48	T.00M, T.00B	58 x 32
80000676	62	T.0, T.1, T.1X	73 x 47,5
80000677	82	T.2, T.2T	98,5 x 57
80000678	100	T.3, T.3HX	124 x 70

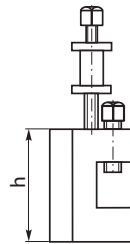


4494

- Standard Schnellwechseleinsatz
- Standard toolholders



Artikel Nr.	Grösse	Für Typ	b x h
Code No.	Size	For Type	
80000660	48	T.00M, T.00B	58 x 27
80000663	62N	T.0	73 x 35
80000662	62	T.1, T.1X	73 x 44
80000665	82N	T.2	98,5 x 50
80000664	82	T.2T	98,5 x 57
80000666	100	T.3, T.3HX	124 x 70

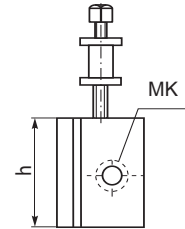


4497

- Schnellwechseleinsatz für Werkzeuge mit MK-Schaft
- Morse taper toolholders



Artikel Nr.	Grösse	Für Typ	MK
Code No.	Size	For Type	MT
80000680	62/1N	T.0	1
80000679	62/1	T.1, T.1X	1
80000681	62/2	T.1, T.1X	2
80000682	82/2	T.2, T.2T	2
80000683	100/3	T.3, T.3HX	3

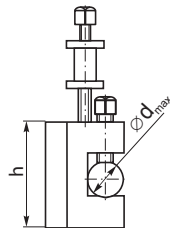


4495

- Schnellwechseleinsatz mit Prisma für runde Werkzeuge
- Vee type toolholders



Artikel Nr.	Grösse	Für Typ	Ø _{d_max}	b x h
Code No.	Size	For Type		
80000667	48	T.00M, T.00B	11,0	58 x 27
80000670	62N	T.0	16,0	73 x 35
80000669	62	T.1, T.1X	16,0	73 x 44
80000672	82N	T.2	19,0	98,5 x 50
80000671	82	T.2T	19,0	98,5 x 57
80000673	100	T.3, 3HX	25,5	124 x 70

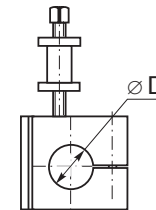


4498

- Schnellwechseleinsatz für Bohrstangenhalter
- Toolholders for boring bars



Artikel Nr.	Grösse	Für Typ	ØD
Code No.	Size	For Type	
80000684	62	T.0, T.1, T.1X	19
80000685	82	T.2, T.2T	25,4
80000687	100	T.3, T.3HX	38



4499

- Schnellwechseleinsatz für Bohrstangenhalter
- Toolholders for boring bars



Artikel Nr.	Grösse	Für Typ	ØD
Code No.	Size	For Type	
80000688	62	T.0, T.1, T.1X	25
80000689	82	T.2, T.2T	32
80000690	100	T.3, T.3HX	40

