



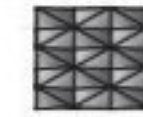
**Machine type:** Conventional and CNC – suitable for:  
 • Lathe machines and automatic short-turning lathes

**Application:** Form knurling (non-cutting forming)

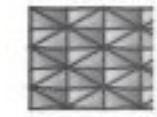
**Knurling profile on work piece DIN 82:**



RAA



RGE30°



RGE45°

**Knurling wheels:**

2xAA

1xBL30° / 1x BR30°

1xBL45° / 1x BR45°

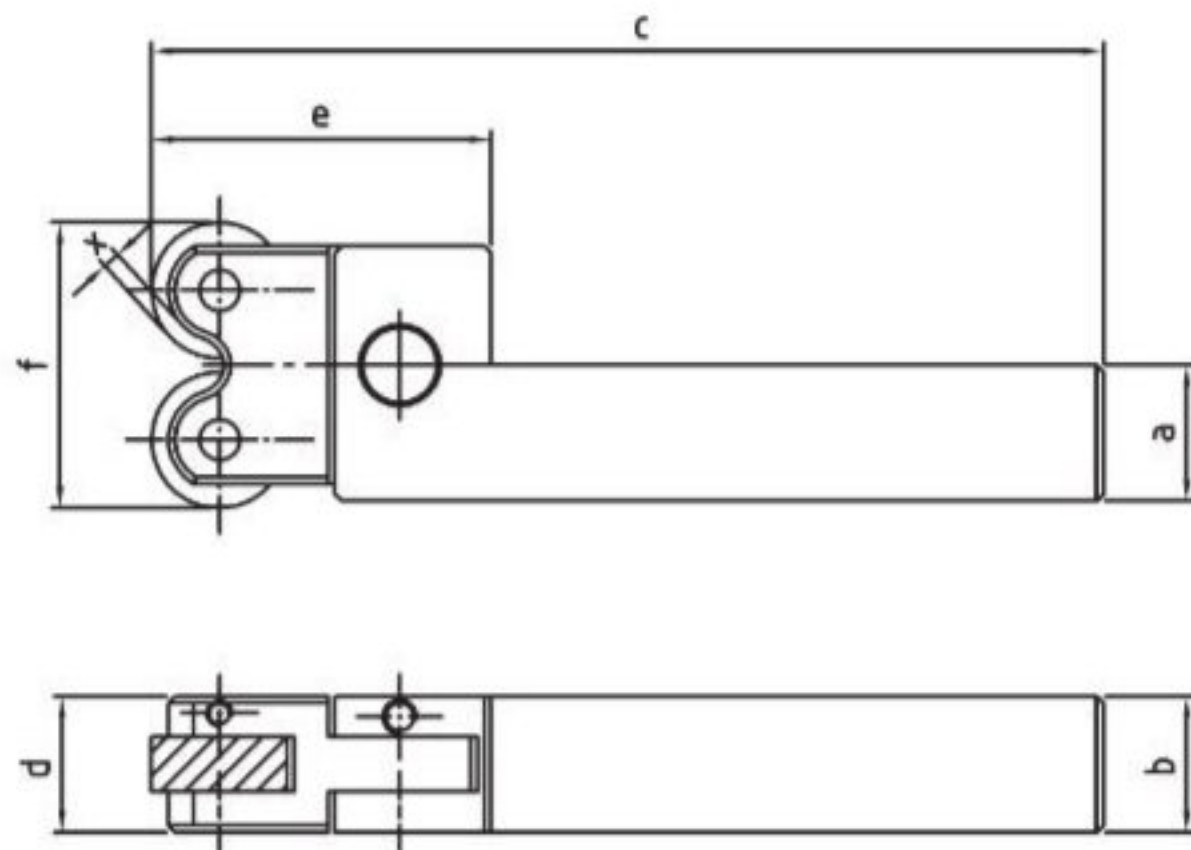
**Tool direction:**

- Plunge knurling
- Feed knurling

**Product features:**

- Modular system: universal knurling tool for both right- / and left-hand orientation. Easy tool conversion.
- Knurl pins and pivot pins fixed by a screw – for a quick replacement of the knurling wheels and the tool head
- Flexible centering
- Easy tool handling

Tool holder No.	Working area Ø mm	a mm	b mm	c mm	d mm	e mm	f mm	x mm	Knurling wheels (Ø x width x bore) mm	Spare Part Pin
841-20M200606	10-80	20	20	130	20	50	42	2,5	20x6x6	21BHR0170
841-20M200806	10-80	20	20	130	20	50	42	2,5	20x8x6	21BHR0170



21BHR0170