

## ► Form knurling tool



### Design:

- modular configuration allows use as right- or left-hand version
- resetting by simple turning of the knurling head
- flexible centring
- threaded pins in the shank for adjustment of clearance angle
- special surface hardening for enhanced wear resistance Carbide pins for higher speeds, faster machining, improved tool life

RD 2



### Use:

Knurl forming (chipless forming) knurling profiles RAA, RGE 30°, RGE 45° to DIN 82. For automatic lathes and lathes, CNC and conventional, centre height is integrated in the tool

### Delivery:

Without knurl



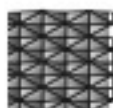
Knurl profile  
at workpiece  
(DIN 82)



RAA

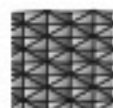
Knurling wheels

2×AA



RGE 30°

1×BL30°/1×BR30°



RGE 45°

1×BL45°/1×BR45°

N° article

189180

for  
knurl  
mm

20 × 8 × 6

Shank  
height  
mm

20

Shank width  
mm

20

Operating range  
mm

10-110-

141-20M