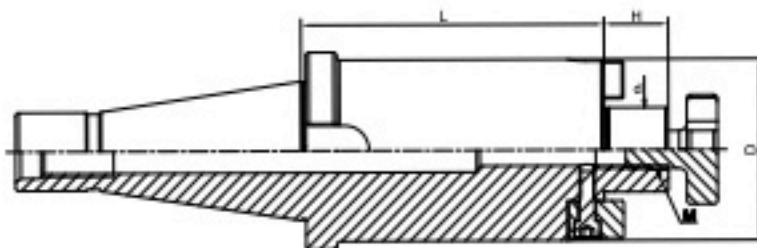
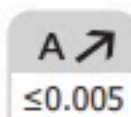


## Face Mill Holder

### 面铣刀柄



| Size               | d  | D  | L  | H  | M   |
|--------------------|----|----|----|----|-----|
| NT30-FMB16-30      | 16 | 38 | 30 | 17 | M8  |
| NT30-FMB22-30      | 22 | 48 | 30 | 19 | M10 |
| NT30-FMB27-45      | 27 | 58 | 45 | 21 | M12 |
| NT30-FMB32-50      | 32 | 78 | 50 | 24 | M16 |
| NT40-FMB16-30(OTT) | 16 | 38 | 30 | 17 | M8  |
| NT40-FMB22-30(OTT) | 22 | 48 | 30 | 19 | M10 |
| NT40-FMB27-30(OTT) | 27 | 58 | 30 | 21 | M12 |
| NT40-FMB32-30(OTT) | 32 | 78 | 30 | 24 | M16 |
| NT40-FMB40-30(OTT) | 40 | 88 | 30 | 27 | M20 |
| NT50-FMB16-30(OTT) | 16 | 38 | 30 | 17 | M8  |
| NT50-FMB22-35(OTT) | 22 | 48 | 35 | 19 | M10 |
| NT50-FMB27-35(OTT) | 27 | 58 | 35 | 21 | M12 |
| NT50-FMB32-40(OTT) | 32 | 78 | 40 | 24 | M16 |
| NT50-FMB40-40(OTT) | 40 | 88 | 40 | 27 | M20 |