

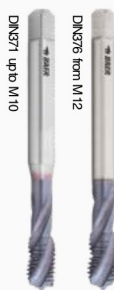
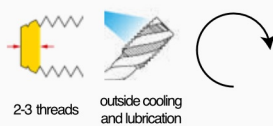
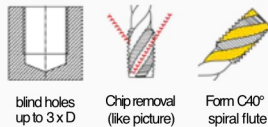
Machine Taps - Form C (with spiral flutes) for blind holes

M metric coarse thread / ISODIN 13

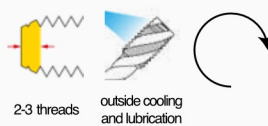
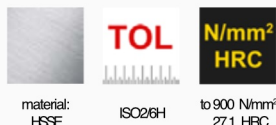
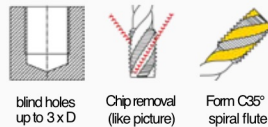
- Tap for machine use in blind holes.
- The fast spiral flutes provide good chip removal from the blind hole.

Machine Tap for universal use

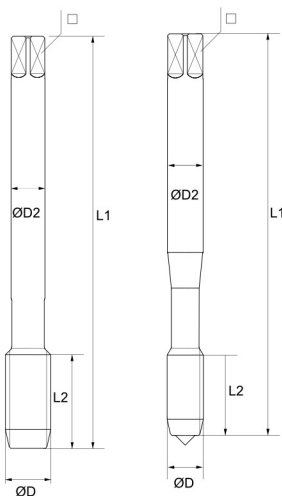
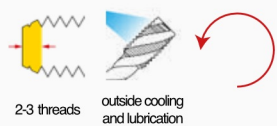
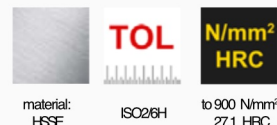
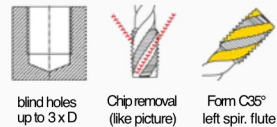
UNITAP



Machine Tap for general use



Machine Tap for general use Left-hand thread



Shank: DIN 376

Shank: DIN 371

M

	D1	D2	L1	L2	□		No.
DIN 371							
M 2 x 0,4	2,0	2,8	45	6	2,1	1,60	110603001
M 2,2 x 0,45	2,2	2,8	45	6	2,1	1,75	110603002
M 2,5 x 0,45	2,5	2,8	50	6	2,1	2,05	110603003
M 3 x 0,5	3,0	3,5	56	6	2,7	2,50	110603004
M 3,5 x 0,6	3,5	4,0	56	13	3,0	2,90	110603005
M 4 x 0,7	4,0	4,5	63	7	3,4	3,30	110603006
M 5 x 0,8	5,0	6,0	70	8	4,9	4,20	110603007
M 6 x 1,0	6,0	6,0	80	10	4,9	5,00	110603008
M 7 x 1,0	7,0	7,0	80	19	5,5	6,00	
M 8 x 1,25	8,0	8,0	90	14	6,2	6,80	110603009
M 10 x 1,5	10,0	10,0	100	16	8,0	8,50	110603010

	D1	D2	L1	L2	□	No.	
DIN 376							
M 3 x 0,5	3,0	2,2	56	6	-	2,50	
M 4 x 0,7	4,0	2,8	63	7	2,1	3,30	
M 5 x 0,8	5,0	3,5	70	8	2,7	4,20	
M 6 x 1,0	6,0	4,5	80	10	3,4	5,00	
M 8 x 1,25	8,0	6,0	90	14	4,9	6,80	
M 10 x 1,5	10,0	7,0	100	16	5,5	8,50	
M 12 x 1,75	12,0	9,0	110	18	7,0	10,20	110603011
M 14 x 2,0	14,0	11,0	110	20	9,0	12,00	110603012
M 16 x 2,0	16,0	12,0	110	22	9,0	14,00	110603013
M 18 x 2,5	18,0	14,0	125	25	11,0	15,50	110603014
M 20 x 2,5	20,0	16,0	140	25	12,0	17,50	110603015
M 22 x 2,5	22,0	18,0	140	27	14,5	19,50	110603016
M 24 x 3,0	24,0	18,0	160	30	14,5	21,00	110603017
M 27 x 3,0	27,0	20,0	160	30	16,0	24,00	110603018
M 30 x 3,5	30,0	22,0	180	35	18,0	26,50	110603019
M 33 x 3,5	33,0	25,0	180	35	20,0	29,50	
M 36 x 4,0	36,0	28,0	200	40	22,0	32,00	
M 39 x 4,0	39,0	32,0	200	40	24,0	35,00	
M 42 x 4,5	42,0	32,0	200	45	24,0	37,50	
M 45 x 4,5	45,0	36,0	220	45	29,0	40,50	
M 48 x 5,0	48,0	36,0	250	50	29,0	43,00	
M 52 x 5,0	52,0	40,0	250	50	32,0	47,00	

No.	No.
110601001	
110601002	
110601003	110602001
110601004	
110601005	110602002
110601006	110602003
110601007	110602004
110601008	
110601009	110602005
110601010	110602006

No.	No.
110601011	110602007
110601012	110602008
110601013	110602009
110601014	110602010
110601015	110602011
110601016	110602012
110601017	110602013
110601018	110602014
110601019	110602015
110601020	110602016
110601021	110602017
110601022	110602018
110601023	110602019
110601024	110602020
110601025	110602021
110601026	110602022
110601027	110602023
110601028	110602024
110601029	110602025
110601030	110602026
110601031	110602027
110601032	110602028