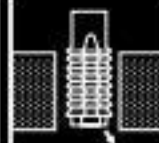
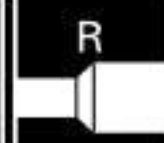


2250

HSSE DIN 371

M  
DIN13Form.  
B  
"Gun"Tol.  
6H

3XD



VAP

P				M		K			N				S		H		
<800	<1.000	<1.200	<1.400	<950	<1.200	<500	<800	<1.400	Al	Cu	Mg/Zn	Plastic	Ni	Ti	50 HRC	55 HRC	60 HRC
●	○			●	○		○		○	●		○					
10-25	10-15			5-10	5-8		10-15		10-15	10-20		10-15					

Vc (m/min). ● Optima / Optimun ○ Alternativo / Alternative



Ø	P
M2,0	0,40
M2,5	0,45
M3,0	0,50
M3,5	0,60
M4,0	0,70

L mm	l mm	□ mm	d mm
45	10	2,10	2,8
50	9	2,10	2,8
56	11	2,70	3,5
56	12	3,00	4,0
63	13	3,40	4,5

Ø	P
M5,0	0,80
M6,0	1,00
M8,0	1,25
M10,0	1,50

L mm	l mm	□ mm	d mm
70	16	4,90	6,0
80	19	4,90	6,0
90	22	6,20	8,0
100	24	8,00	10,0