

# Präzisions-Gewindelehren

## Metrisches ISO-Trapez-Gewinde DIN 103

Lehrenmaße nach DIN 103-9

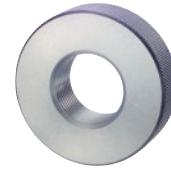
### Precision thread gauges

ISO metric trapezoidal thread DIN 103

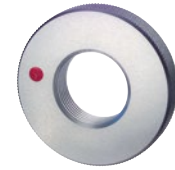
Gauge dimensions acc. DIN 103-9



LD



GR



AR



| ORDER-CODE → |         | LD                                       | GR                                       | AR                                                |
|--------------|---------|------------------------------------------|------------------------------------------|---------------------------------------------------|
| d            | P<br>mm | <b>7H</b><br>Grenzlehndorn<br>Plug gauge | <b>7e</b><br>Gutlehring<br>GO ring gauge | <b>7e</b><br>Ausschuslehring<br>NOT GO ring gauge |
| ↓            | ↓       |                                          |                                          |                                                   |
|              |         | Art.-Nr.                                 | Art.-Nr.                                 | Art.-Nr.                                          |
| Tr 8         | 1,5     | 515056 ●                                 | 502538 ●                                 | 501198 ●                                          |
| Tr 10        | 2       | 512549 ●                                 | 502508 ●                                 | 501177 ●                                          |
| Tr 11        | 2       | 514745 ●                                 | 502510 ●                                 | 501179 ●                                          |
| Tr 12        | 3       | 512554 ●                                 | 502512 ●                                 | 503037 ●                                          |
| Tr 14        | 3       | 512557 ●                                 | 502515 ●                                 | 503435 ●                                          |
| Tr 16        | 4       | 512559 ●                                 | 502517 ●                                 | 501185 ●                                          |
| Tr 18        | 4       | 512561 ●                                 | 503375 ●                                 | 501187 ●                                          |
| Tr 20        | 4       | 512563 ●                                 | 502521 ●                                 | 501188 ●                                          |
| Tr 22        | 5       | 512565 ●                                 | 502523 ●                                 | 501189 ●                                          |
| Tr 24        | 5       | 512566 ●                                 | 502525 ●                                 | 501191 ●                                          |
| Tr 26        | 5       | 512569 ●                                 | 502527 ●                                 | 501193 ●                                          |
| Tr 28        | 5       | 512570 ●                                 | 503465 ●                                 | 503466 ●                                          |
| Tr 30        | 6       | 512571 ●                                 | 502531 ●                                 | 502742 ●                                          |
| Tr 32        | 6       | 512572 ●                                 | 502825 ●                                 | 502826 ●                                          |

● am Lager, siehe Preisliste

● in stock, see price list