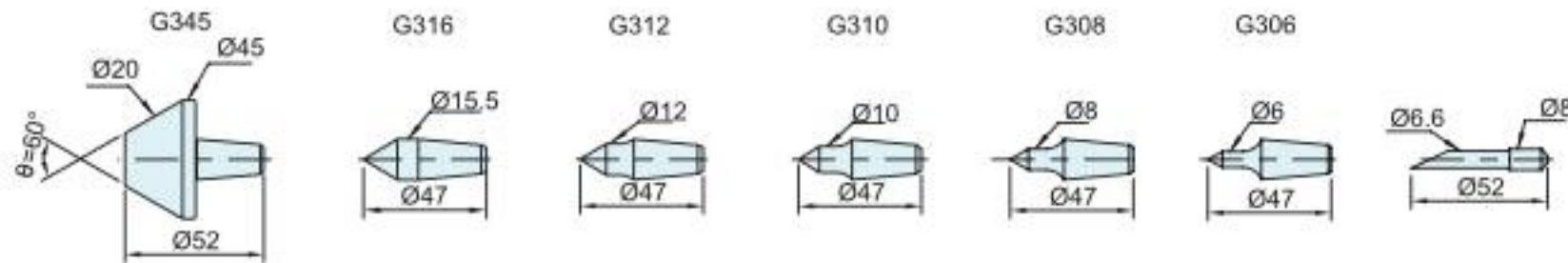
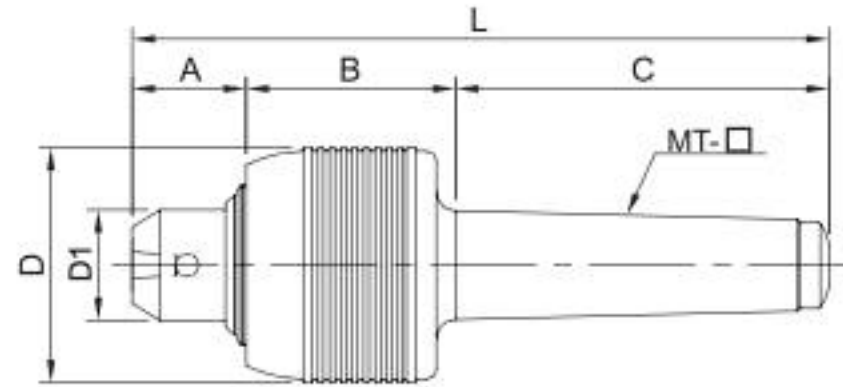


# High Load Interchangeable Points Live Center



- Shaft uses material SUJ2:through vacuum heat treatment, it is even more durable, hardness is as high as (HRC60°±2°) and satisfied wear-resistance.
- Front end is constituted by SKF angular contact ball bearing & thrust ball bearing. middle & rear ends are comprised of needle roller bearing assembly.
- These centers are suitable for NC lathe at high-speed & heavy-load operation, water-proof.

※Suggested tailstock pressure under 6 kg/cm<sup>2</sup>

Unit:mm

ORDER NO.	A	B	C	D	D1	L	Accuracy	Speed Max. R.P.M.	θ	G.W. weight kgs	PACKING LxWxH	CODE NO.
VCP-MT4	30	64	108	68	32	202	0.005	4500	60°	3	253 x 130 x 80	5001-060
VCP-MT5	37	70	136	87	40	243	0.005	3000	60°	5.5	275 x 147 x 97	5001-061