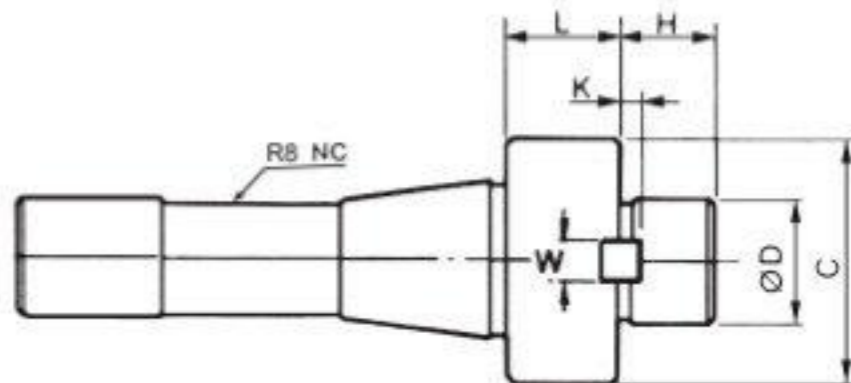
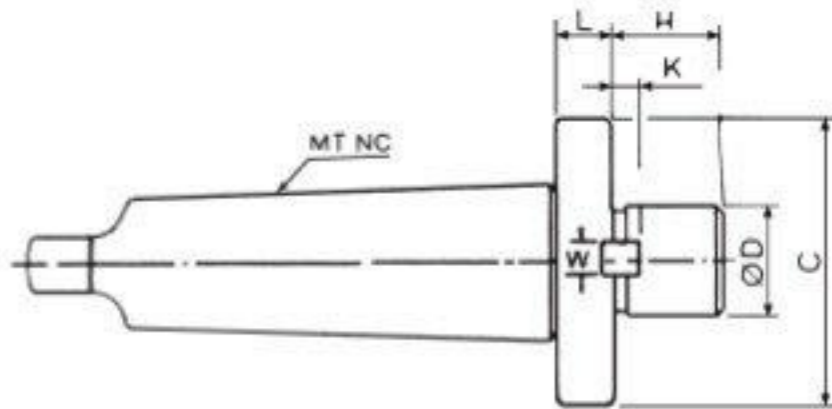




NT30



### METRIC FMB TYPE MM THREAD

ORDER NO.	TAPER	SHAFT SIZE				MOUNTING SIZE		WEIGHT (kg)	CODE NO.
		D	H	W	K	C	L		
VF-120	NT30	22	18	9.57	5	40	20	0.7	3212-100
VF-121		27	20	12.75	7	53	20	0.8	3212-101
VF-122		32	23	15.90	7	63	20	1.1	3212-102
VF-123	NT40	22	18	9.57	5	40	20	1.2	3212-103
VF-123-1		16	17	16.4		40	20	1.17	3212-103A
VF-124		27	20	12.75	7	53	20	1.3	3212-104
VF-125		32	23	15.90	7	63	20	1.4	3212-105
VF-126		40	26	19.05	8	85	20	1.9	3212-106
VF-127		60	32	25.40	5	128	24	4	3212-107
VF-128		NT50	22	18	9.57	5	40	20	3.1
VF-129	27		20	12.75	7	53	20	3.3	3212-109
VF-130	32		23	15.90	7	63	20	3.5	3212-110
VF-131	40		26	19.05	8	85	20	3.7	3212-111
VF-132	60		32	25.40	5	128.57	24	5.4	3212-112
VF-134	R8	22	18	9.57	5	40	20	0.9	3212-113
VF-135		27	20	12.75	7	53	20	1	3212-114
VF-136	MT-3	27	20	9.57	7	53	20	0.7	3212-115
VF-137	MT4	27	20	9.57	7	53	20	1.1	3212-116