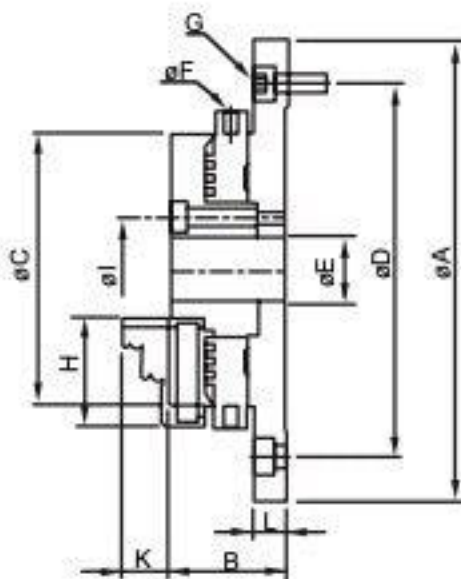
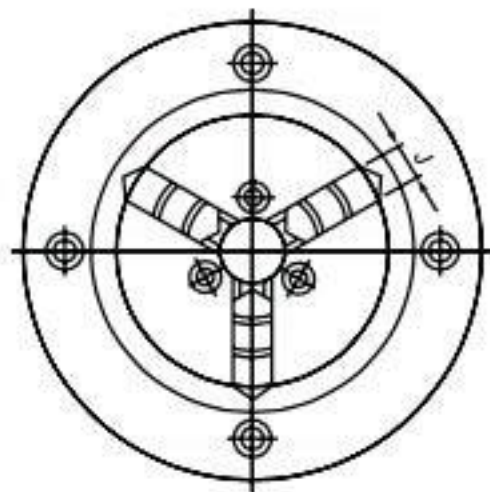




Low Profile Chuck



NEW



- Compact, Small And Light Weight
- No Wrench Required, Turn To Loose & Lock By Fixing Ring
- Steel Made Body
- Reversible Jaws
- VLBK-Series Is Latest Vertical Clamping Design For CNC, Milling Machine And Machining Center.

DIMENSIONS

ORDER NO.	A	B	C	D	E	F	G	H	I	J	K	L	Gripping Range		Weight (kgs)	CODE NO.
													O.D. Range	I.D. Range		
VLBK-2	118	28	63	100	16	4	4-M5X0.8P	27	26	8	13	8	ø0.8~ø63	ø23~ø58	1.2	5002-130
VLBK-3	143	37	85	116	20	4	4-M6X1.0P	35	32	11	15	10.5	ø1~ø81	ø31~ø70	2.9	5002-131
VLBK-4	168	39	110	140	26	5	4-M6X1.0P	42	40	14	19	10	ø1~ø100	ø36~ø90	4.6	5002-132
VLBK-5	202	45	130	168	32	6	4-M8X1.25P	50	49	16	21	11.5	ø1.5~ø116	ø43~ø106	6.2	5002-133
VLBK-6	248	52	160	208	50	8	4-M10X1.5P	65	70	19	26	15	ø1.5~ø160	ø52~ø148	11	5002-134