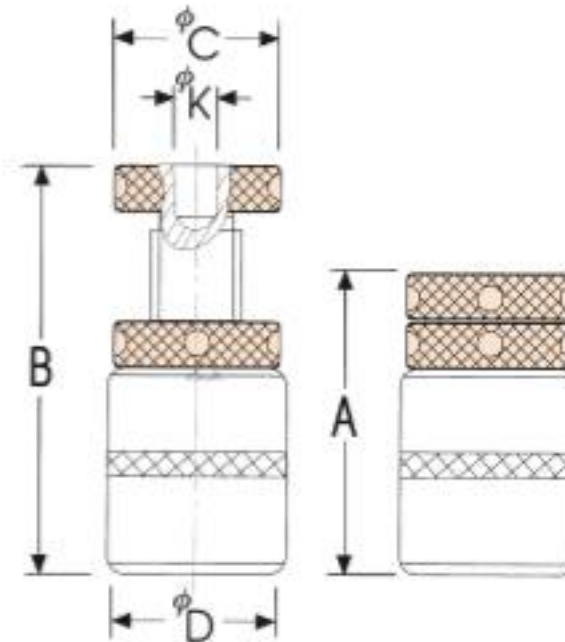


Thread Rod Jack With Magnet



- Cross type fixture gives best positioning.
- Built-in magnets designed, easy to clean chips.
- Height adjuster



ORDER NO.	A	B	C	D	K	ALLOWED LOAD KN	K.G.	CODE NO.
VSJM-50	42	47	35	40	11.5	30	0.4	1014-010
VSJM-70	51	65	35	40	11.5	30	0.5	1014-011
VSJM-85	67	87	40	45	11.5	30	0.7	1014-012
VSJM-110	86	116	40	45	11.5	30	0.8	1014-013
VSJM-165	110	170	45	50	11.5	30	1.4	1014-014