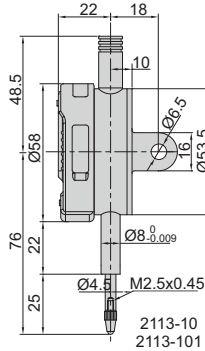


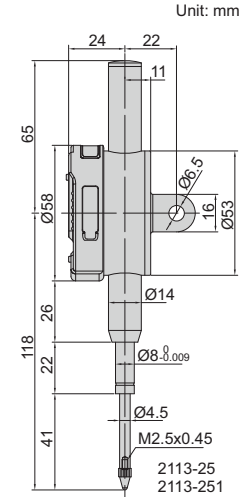
spindle lift knob is included



- No auto power off, tracking the deformation of mould and steel structure for a long time
- Low power consumption
- Button function: on/off, zero, inch/mm, data preset, change measuring direction, absolute/incremental measurement
- Keep preset data in memory after restart
- CR2032 battery
- Data output
- Optional accessory: data output cable (code **7315-50M, 7302-40M, 7305-40M**), backs (page 164~165), contact points (page 161~163)



**2113-10**



**2113-251**

## Resolution 0.001mm/0.00005"

Code	Range	Accuracy	Hysteresis	Remark
<b>2113-101F*</b>	12.7mm/0.5"	5µm	2µm	flat back
<b>2113-251F*</b>	25.4mm/1"	5µm	3µm	flat back
<b>2113-101*</b>	12.7mm/0.5"	5µm	2µm	lug back
<b>2113-251*</b>	25.4mm/1"	5µm	3µm	lug back

\* Supplied with manufacturer inspection certificate traceable to NIST USA

## Resolution 0.01mm/0.0005"

Code	Range	Accuracy	Hysteresis	Remark
<b>2113-10F*</b>	12.7mm/0.5"	20µm	10µm	flat back
<b>2113-25F*</b>	25.4mm/1"	20µm	10µm	flat back
<b>2113-10*</b>	12.7mm/0.5"	20µm	10µm	lug back
<b>2113-25*</b>	25.4mm/1"	20µm	10µm	lug back