

# DIGITAL LEVEL CODE ISE-2DT

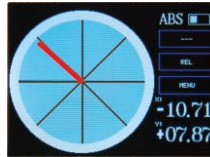
DATA  
OUTPUT



- Color LCD, touch panel
- X-Y axis measurement
- Set the tolerance and the display is shown in different colors

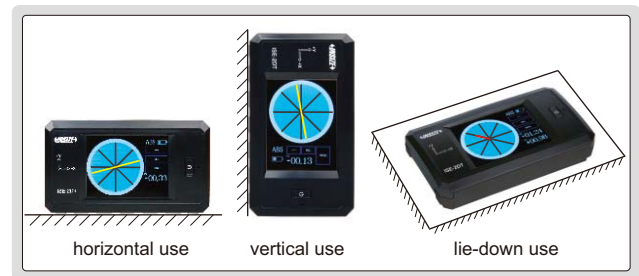
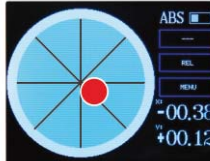
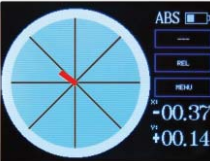


within the tolerance (green)

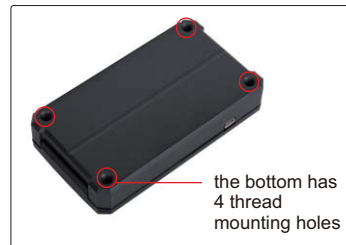


out of the tolerance (red)

- To show the incline with line or bubble

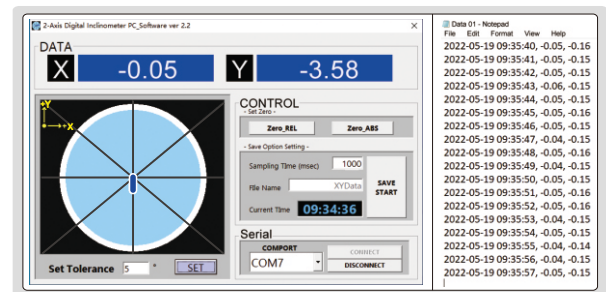


charging and data output



the bottom has 4 thread mounting holes

PC software (optional),  
send data to txt



## SPECIFICATION

Measuring range	±30°
Resolution	0.1°, 0.01°, 0.1mm/m
Accuracy	±0.03° (range 0~3°) ±0.05° (range >3°)
Power supply	rechargeable battery
Dimension	115×66×25mm
Weight	224g

## STANDARD DELIVERY

Main unit	1 pc
USB cable	1 pc

## OPTIONAL ACCESSORY

Software	ISE-2DT-SOFTWARE
----------	------------------