

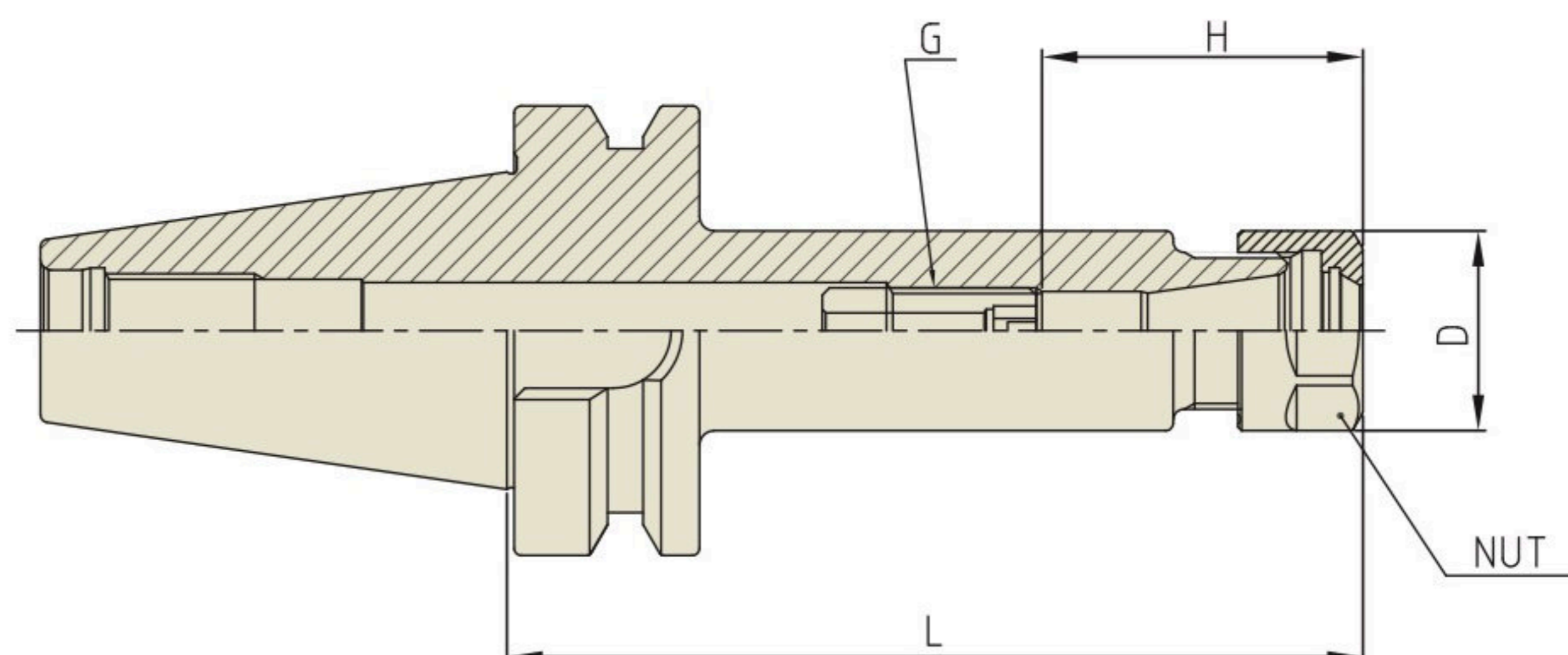


# ER COLLET CHUCK

ER

## ER COLLET CHUCK

SPANN FUTTER - ER  
MANDRIN À PINCES - ER  
MANDRINO PORTA PINZE - ER  
PORTAPINZAS - ER



Unit : mm

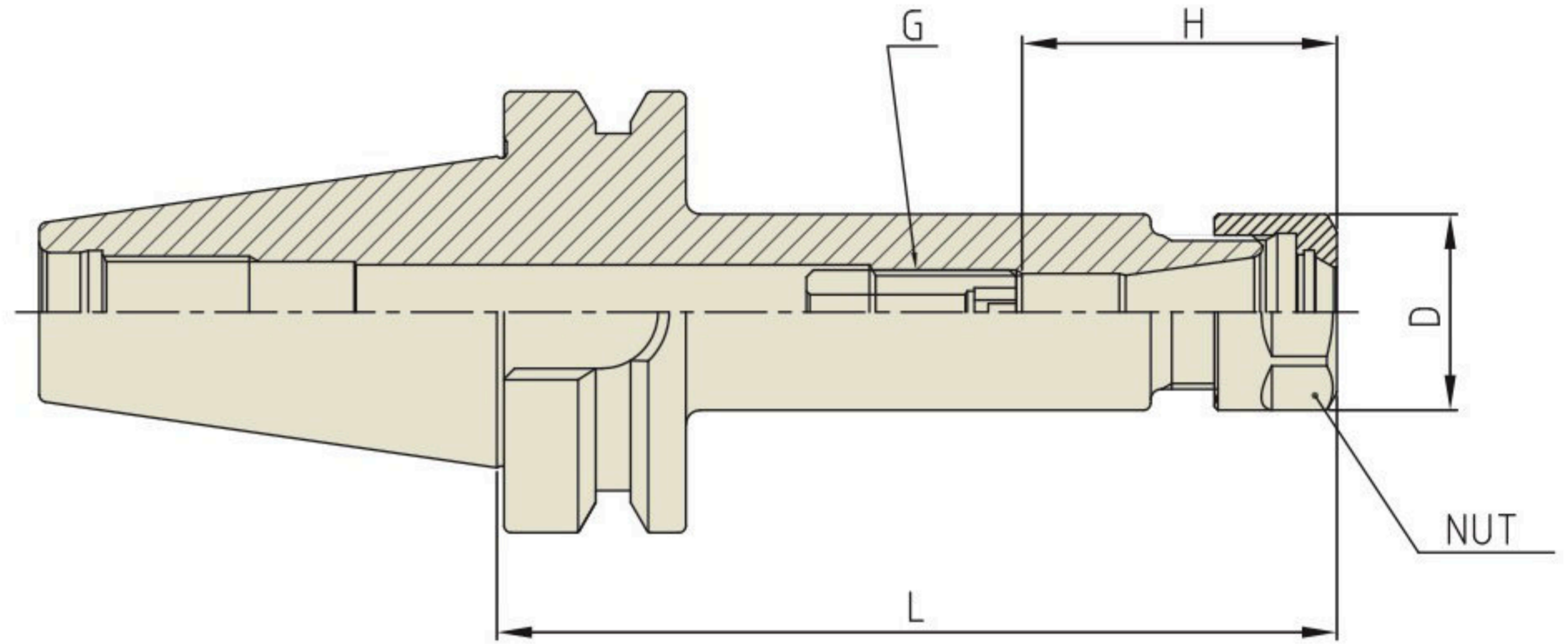
TAPER No.	MODEL No.	EDP No.	CLAMPING RANGE	L	D	G	H	NUT / COLLET	WEIGHT (Kg)
50	CBT50-ER16-100	P2772018	0.5 - 10.0	100	28	M10	45	ER16	4.20
	CBT50-ER16-120	P2772019	0.5 - 10.0	120	28	M10	45	ER16	4.40
	CBT50-ER16-165	P2772020	0.5 - 10.0	165	28	M10	45	ER16	4.60
	CBT50-ER20-100	P2772021	0.5 - 13.0	100	34	M12	50	ER20	4.60
	CBT50-ER20-135	P2772022	0.5 - 13.0	135	34	M12	50	ER20	4.80
	CBT50-ER20-165	P2772023	0.5 - 13.0	165	34	M12	50	ER20	5.00
	CBT50-ER25-100	P2772024	1.0 - 16.0	100	42	M12	65	ER25	4.70
	CBT50-ER25-135	P2772025	1.0 - 16.0	135	42	M12	65	ER25	4.80
	CBT50-ER25-165	P2772026	1.0 - 16.0	165	42	M12	65	ER25	5.00
	CBT50-ER32-100	P2772027	1.0 - 20.0	100	50	M12	65	ER32	5.20
	CBT50-ER32-135	P2772028	1.0 - 20.0	135	50	M12	65	ER32	5.70
	CBT50-ER32-165	P2772029	1.0 - 20.0	165	50	M12	65	ER32	5.80
	CBT50-ER40-100	P2772030	2.0 - 30.0	100	63	M12	75	ER40	5.60
	CBT50-ER40-150	P2772031	2.0 - 30.0	150	63	M12	75	ER40	6.10
	CBT50-ER50-100	P2772032	4.0 - 34.0	100	78	M16	85	ER50	5.80
CBT50-ER50-150	P2772033	4.0 - 34.0	150	78	M16	85	ER50	6.30	

- ▶ Balancing grade G2.5 at 25,000RPM or U max. < 1gmm.
- ▶ For applicable ER collet, please refer to page D296~D304.
- ▶ For applicable ER nut, Sealing disk and Spanner, please refer to page D305~D309.



### ER COLLET CHUCK

SPANN FUTTER - ER  
 MANDRIN À PINCES - ER  
 MANDRINO PORTA PINZE - ER  
 PORTAPINZAS - ER



Unit : mm

TAPER No.	MODEL No.	EDP No.	CLAMPING RANGE	L	D	G	H	NUT / COLLET	WEIGHT (Kg)
30	CBT30-ER11-70	P2776802	0.5 - 7.0	70	19	M6	45	ER11	0.50
	CBT30-ER11-100	P2776803	0.5 - 7.0	100	19	M6	45	ER11	0.50
	CBT30-ER16-70	P2776804	0.5 - 10.0	70	28	M10	45	ER16	1.00
	CBT30-ER16-100	P2776805	0.5 - 10.0	100	28	M10	45	ER16	1.10
	CBT30-ER20-80	P2776806	0.5 - 13.0	80	34	M12	50	ER20	1.20
	CBT30-ER20-100	P2776807	0.5 - 13.0	100	34	M12	50	ER20	1.30
	CBT30-ER25-70	P2776808	1.0 - 16.0	70	42	M12	65	ER25	1.20
	CBT30-ER25-100	P2776809	1.0 - 16.0	100	42	M12	65	ER25	1.30
	CBT30-ER32-60	P2776801	1.0 - 20.0	60	50	M12	65	ER32	1.40
	CBT30-ER32-90	P2776810	1.0 - 20.0	90	50	M12	65	ER32	1.90
40	CBT40-ER11-75	P2772004	0.5 - 7.0	75	19	M6	45	ER11	1.00
	CBT40-ER11-100	P2772005	0.5 - 7.0	100	19	M6	45	ER11	1.10
	CBT40-ER16-75	P2772006	0.5 - 10.0	75	28	M10	45	ER16	1.10
	CBT40-ER16-100	P2772001	0.5 - 10.0	100	28	M10	45	ER16	1.20
	CBT40-ER16-120	P2772007	0.5 - 10.0	120	28	M12	45	ER16	1.40
	CBT40-ER20-75	P2772008	0.5 - 13.0	75	34	M12	50	ER20	1.40
	CBT40-ER20-100	P2772009	0.5 - 13.0	100	34	M12	50	ER20	1.80
	CBT40-ER20-135	P2772010	0.5 - 13.0	135	34	M12	50	ER20	2.20
	CBT40-ER25-75	P2772011	1.0 - 16.0	75	42	M12	65	ER25	1.40
	CBT40-ER25-100	P2772002	1.0 - 16.0	100	42	M12	65	ER25	1.80
	CBT40-ER25-135	P2772012	1.0 - 16.0	135	42	M12	65	ER25	2.20
	CBT40-ER25-150	P2772013	1.0 - 16.0	150	42	M12	65	ER25	2.40
	CBT40-ER32-60	P2772014	1.0 - 20.0	60	50	M12	65	ER32	1.80
	CBT40-ER32-100	P2772003	1.0 - 20.0	100	50	M12	65	ER32	2.20
	CBT40-ER32-120	P2772015	1.0 - 20.0	120	50	M12	65	ER32	2.40
	CBT40-ER32-150	P2772016	1.0 - 20.0	150	50	M12	65	ER32	2.60
	CBT40-ER40-80	P2772017	2.0 - 30.0	80	63	M12	75	ER40	1.50

- ▶ Balancing grade G2.5 at 25,000RPM or U max. < 1gmm.
- ▶ For applicable ER collet, please refer to page D296~D304.
- ▶ For applicable ER nut, Sealing disk and Spanner, please refer to page D305~D309.